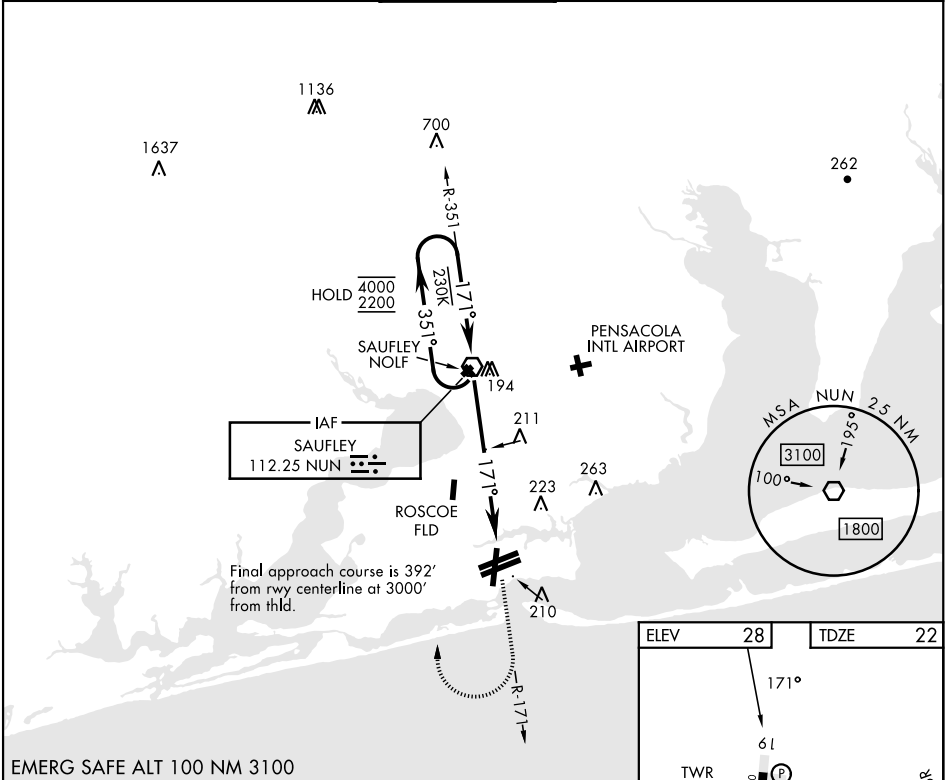
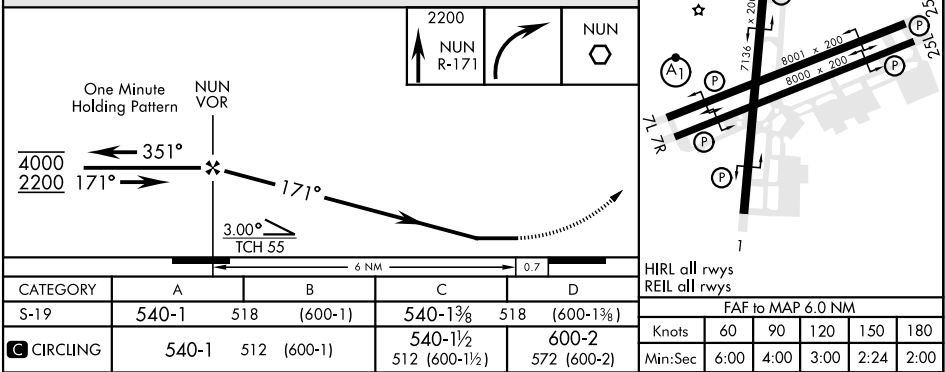


VOR Y RWY 19

VOR NUN 112.25	APCH CRS 171°	Rwy Idg 7136 TDZE 22 Arpt Elev 28	[USN]	PENSACOLA NAS (FORREST SHERMAN FLD) (KNPA)			
RADAR required				MISSED APPROACH: Climb to 2200 via NUN R-171. Then turn right direct NUN VOR and hold. Remain within 15 NM of NUN.			
▼							
ATIS 124.35 266.8		APP CON 120.65 270.8		SHERMAN TOWER 120.7 340.2	GND CON 121.7 336.4	CLNC DEL 134.1 268.7	ASR/ PAR



EMERG SAFE ALT 100 NM 3100



VOR Y RWY 19

SE-3, 10 JUL 2025 to 07 AUG 2025

SE-3, 10 JUL 2025 to 07 AUG 2025