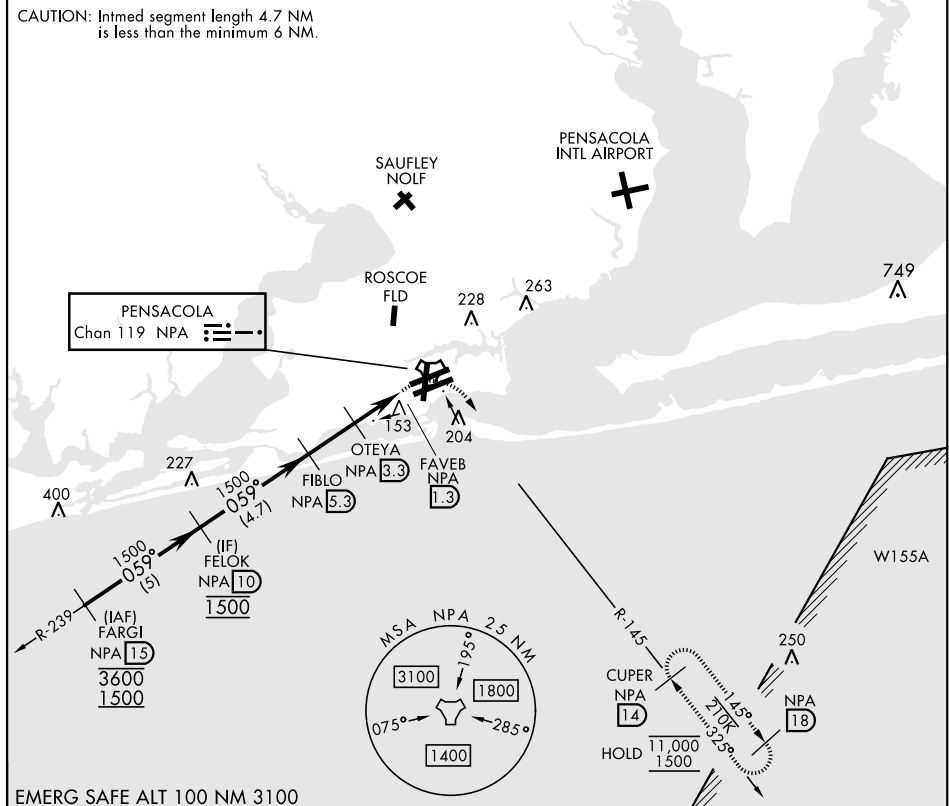


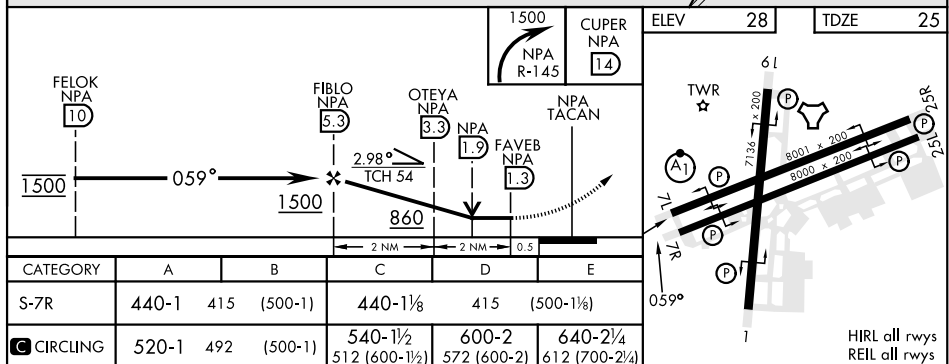
TACAN Y RWY 7R

TACAN NPA Chan 119	APCH CRS 059°	Rwy Idg 8000 TDZE 25 Arpt Elev 28	[USN]	PENSACOLA NAS (FORREST SHERMAN FLD) (KNPA)			
RADAR required ▼			MISSED APPROACH: Climbing right turn to 1500 via NPA TACAN R-145 to CUPER and hold.				
ATIS 124.35 266.8	APP CON 120.65 270.8		SHERMAN TOWER 120.7 340.2		GND CON 121.7 336.4	CLNC DEL 134.1 268.7	ASR/ PAR

CAUTION: Intmed segment length 4.7 NM
is less than the minimum 6 NM



EMERG SAFE ALT 100 NM 3100



HIRL all rwys
REIL all rwys