

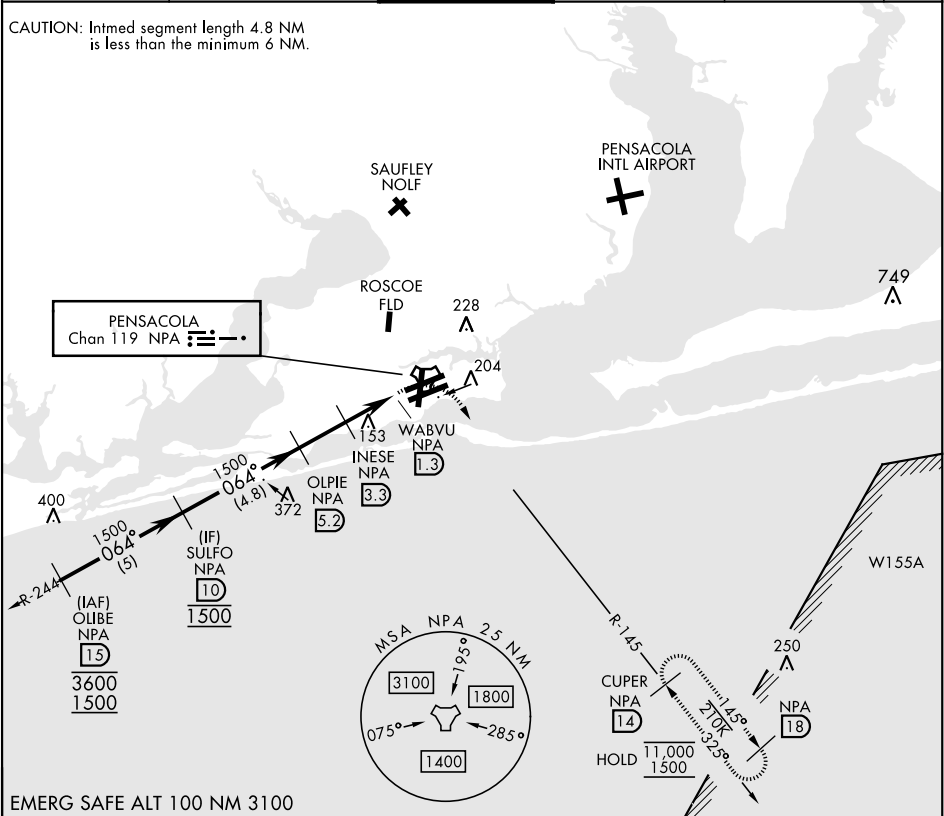
TACAN Y RWY 7L

TACAN NPA Chan 119	APCH CRS 064°	Rwy Idg TDZE 23 Arpt Elev 28
------------------------------	-------------------------	--

[USN] PENSACOLA NAS (FORREST SHERMAN FLD) (KNPA)

RADAR required * When ALS inop, increase CAT AB vis to 1 mile, CAT CDE vis to 1 1/8 miles.	ALS F-1 A1	MISSED APPROACH: Climbing right turn to 1500 via NPA TACAN R-145 to CUPER and hold.
--	---------------	--

ATIS 124.35 266.8	APP CON 120.65 270.8	SHERMAN TOWER 120.7 340.2	GND CON 121.7 336.4	CLNC DEL 134.1 268.7	ASR/ PAR
-----------------------------	--------------------------------	-------------------------------------	-------------------------------	--------------------------------	-------------



SULFO NPA 10		OLPIE NPA 5.2		INESE NPA 3.3		WABVU NPA 1.9		CUPER NPA 14		ELEV 28	TDZE 23
1500		1500		880		880		880		880	
CATEGORY		A	B	C	D	E					
S-7L *		440-½	417 (500-½)	440-¾	417 (500-¾)						
CIRCLING		520-1	492 (500-1)	540-1½ 512 (600-1½)	600-2 572 (600-2)	640-2¼ 612 (700-2¼)					

TACAN Y RWY 7L

SE-3, 10 JUL 2025 to 07 AUG 2025

SE-3, 10 JUL 2025 to 07 AUG 2025