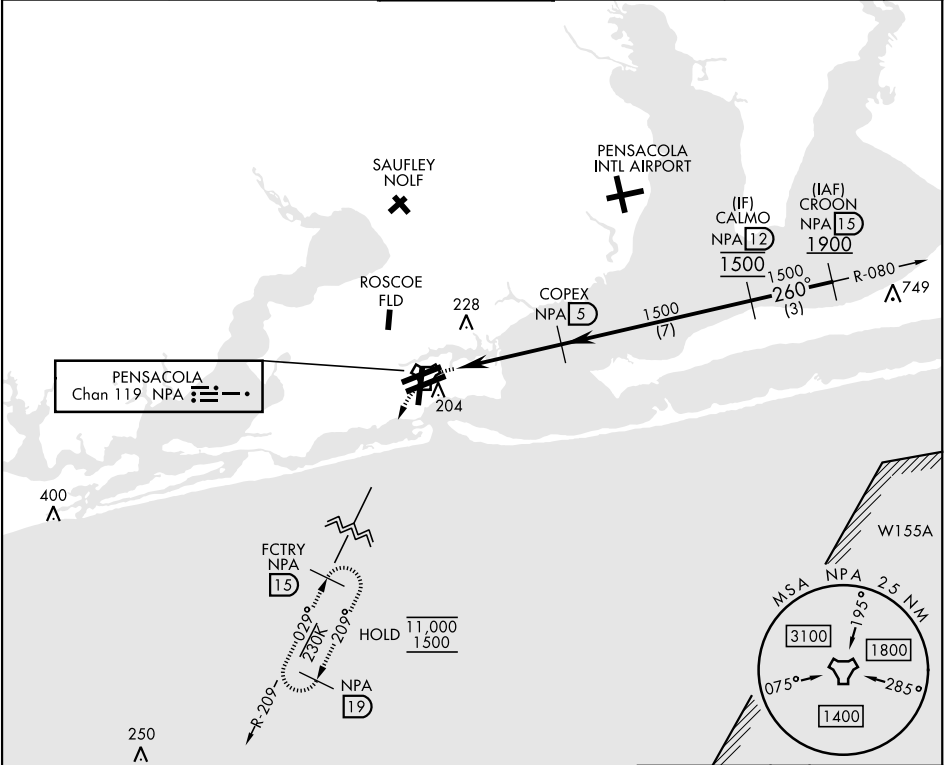


TACAN Y RWY 25R

TACAN NPA Chan 119	APCH CRS 260°	Rwy Idg 8001 TDZE 21 Arpt Elev 28	[USN]	PENSACOLA NAS (FORREST SHERMAN FLD) (KNPA)				
RADAR required ▼				MISSED APPROACH: Climbing left turn to 1500 via NPA TACAN R-209 to FCTRY and hold.				
ATIS 124.35 266.8		APP CON 120.65 270.8		SHERMAN TOWER 120.7 340.2		GND CON 121.7 336.4	CLNC DEL 134.1 268.7	ASR/ PAR



EMERG SAFE ALT 100 NM 3100						ELEV 28	TDZE 21
<div>1500</div> <div>NPA</div> <div>R-209</div>		<div>FCTRY NPA</div> <div>15</div>					
CATEGORY	A	B	C	D	E	<div>HIRL all rws</div> <div>REIL all rws</div>	
S-25R	500-1	479 (500-1)	500-1 $\frac{3}{8}$ 479 (500-1 $\frac{3}{8}$)				
<div>C</div> CIRCLING	520-1	492 (500-1)	540-1 $\frac{1}{2}$ 512 (600-1 $\frac{1}{2}$)	600-2 572 (600-2)	640-2 $\frac{1}{4}$ 612 (700-2 $\frac{1}{4}$)		

TACAN Y RWY 25R

SE-3, 10 JUL 2025 to 07 AUG 2025

SE-3, 10 JUL 2025 to 07 AUG 2025