

PENSACOLA, FLORIDA

RNAV (GPS) RWY 7R

- (USN)

PENSACOLA NAS (FORREST SHERMAN FLD) (KNPA)

APCH CRS 071°	Rwy Idg TDZE Arpt Elev	8000 25 28
------------------	------------------------------	------------------

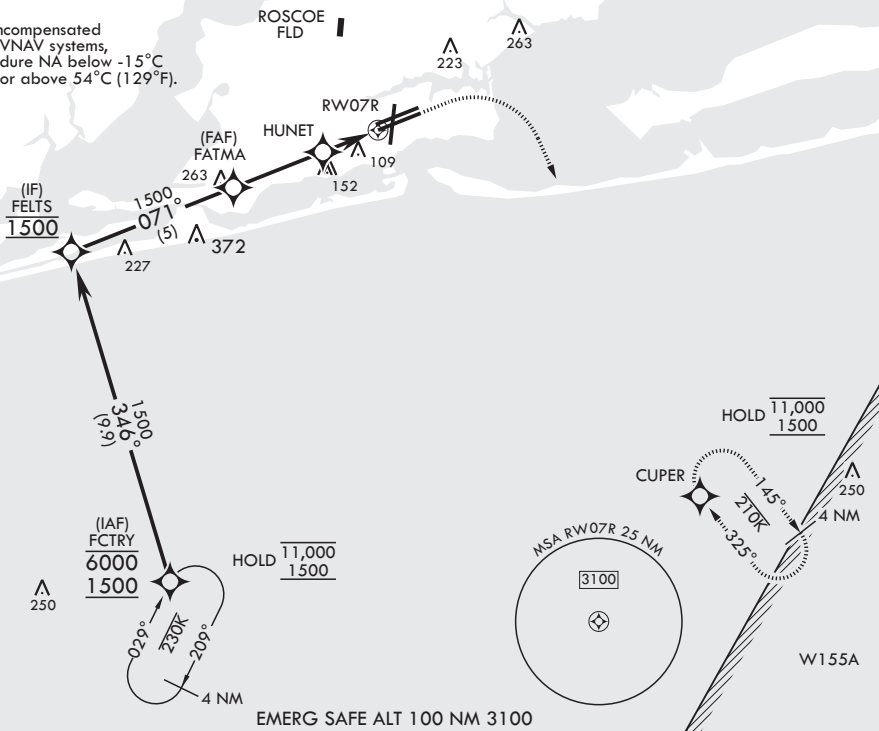
RNP APCH-GPS

MISSED APPROACH: Climb to 800 then climbing right turn to 1500 direct CUPER and hold.

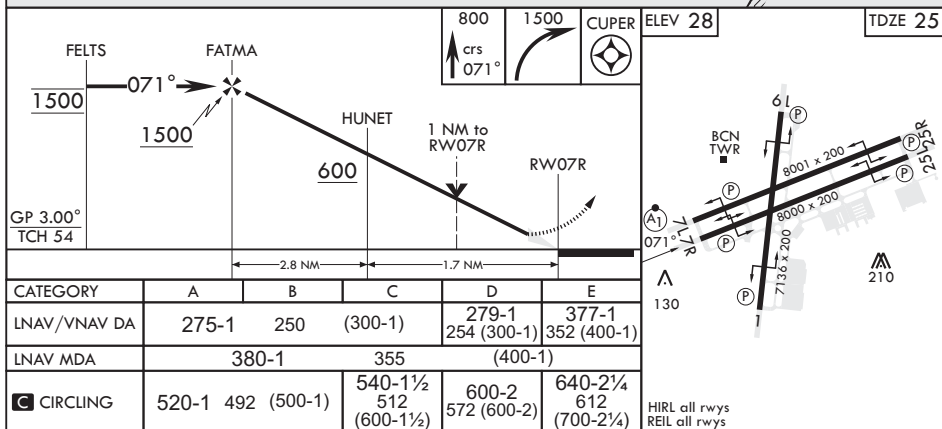
ATIS 124.35 266.8	APP CON 120.65 270.8	SHERMAN TOWER 120.7 340.2	SHERMAN GND CON 121.7 336.4	SHERMAN CLNC DEL 134.1 268.7	ASR/PAR
----------------------	-------------------------	------------------------------	--------------------------------	---------------------------------	---------

125

For uncompensated Baro-VNAV systems, Procedure NA below -15°C (5°F) or above 54°C (129°F).



EMERG SAFE ALT 100 NM 3100



PENSACOLA, FLORIDA

30°21'N - 87°19'W PENSACOLA NAS (FORREST SHERMAN FLD) (KNPA)

Amdt 4 12JUN25

RNAV (GPS) RWY 7R

SE-3, 10 JUL 2025 to 07 AUG 2025

SE-3, 10 JUL 2025 to 07 AUG 2025