

RNAV (GPS) RWY 25L

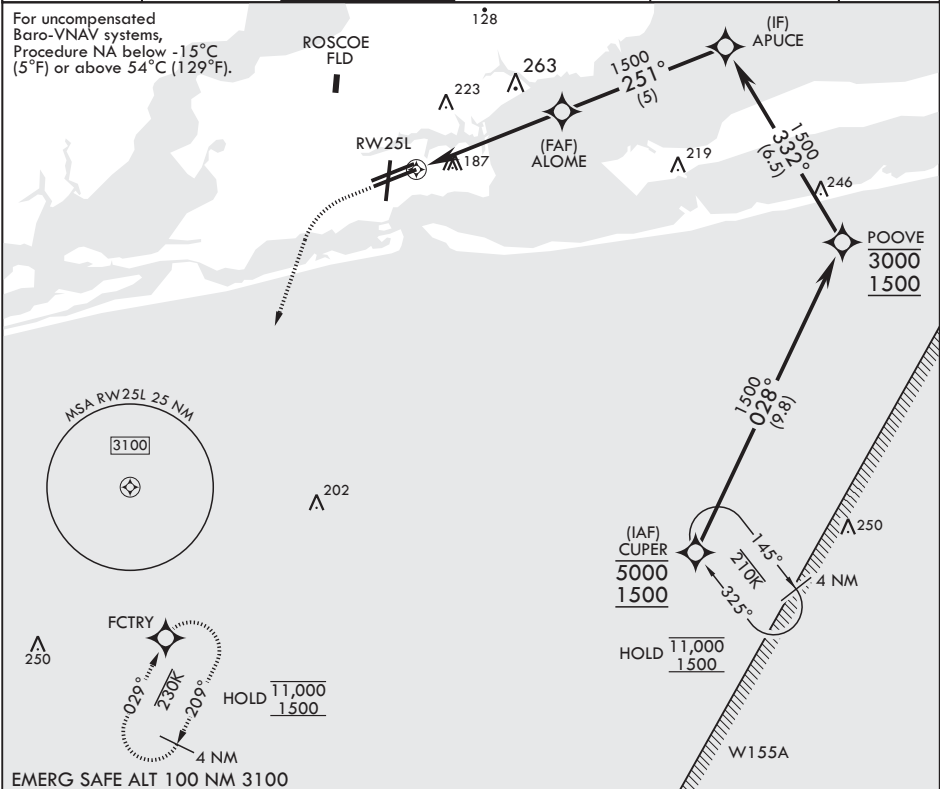
- (USN)

PENSACOLA NAS (FORREST SHERMAN FLD) (KNPA)

APCH CRS	Rwy Idg	8000
251°	TDZE	22
	Arpt Elev	28

RNP APCH-GPS	MISSED APPROACH: Climb to 800 then climbing left turn to 1500 direct FCTRY and hold.
RADAR required	

ATIS 124.35 266.8	APP CON 120.65 270.8	SHERMAN TOWER 120.7 340.2	SHERMAN GND CON 121.7 336.4	SHERMAN CLNC DEL 134.1 268.7	ASR/PAR
----------------------	-------------------------	------------------------------	--------------------------------	---------------------------------	---------



800 1500 FCTRY

ALOME APUCE

251° 1500

GP 3.00° TCH 52

1.2 NM to RW25L

4.5 NM

RW25L

CATEGORY	A	B	C	D
RNAV/VNAV DA	460-1 $\frac{1}{4}$	438	(500-1 $\frac{1}{4}$ )	
RNAV MDA	460-1 438 (500-1)	460-1 $\frac{1}{4}$ 438 (500-1 $\frac{1}{4}$ )		
<b>C</b> CIRCLING	520-1 492 (500-1)	540-1 $\frac{1}{2}$ 512 (600-1 $\frac{1}{2}$ )	600-2 572 (600-2)	

ELEV 28 TDZE 22

BCN TWR

6L 25R 25L 713R

210

8001 x 200 8000 x 200 7136 x 200

251° 251° 251°

HIRL all rwys REIL all rwys

RNAV (GPS) RWY 25L

SE-3, 10 JUL 2025 to 07 AUG 2025

SE-3, 10 JUL 2025 to 07 AUG 2025