

PENSACOLA, FLORIDA

APCH CRS	Rwy Idg	7136
189°	TDZE	22
	Arprt Elev	28

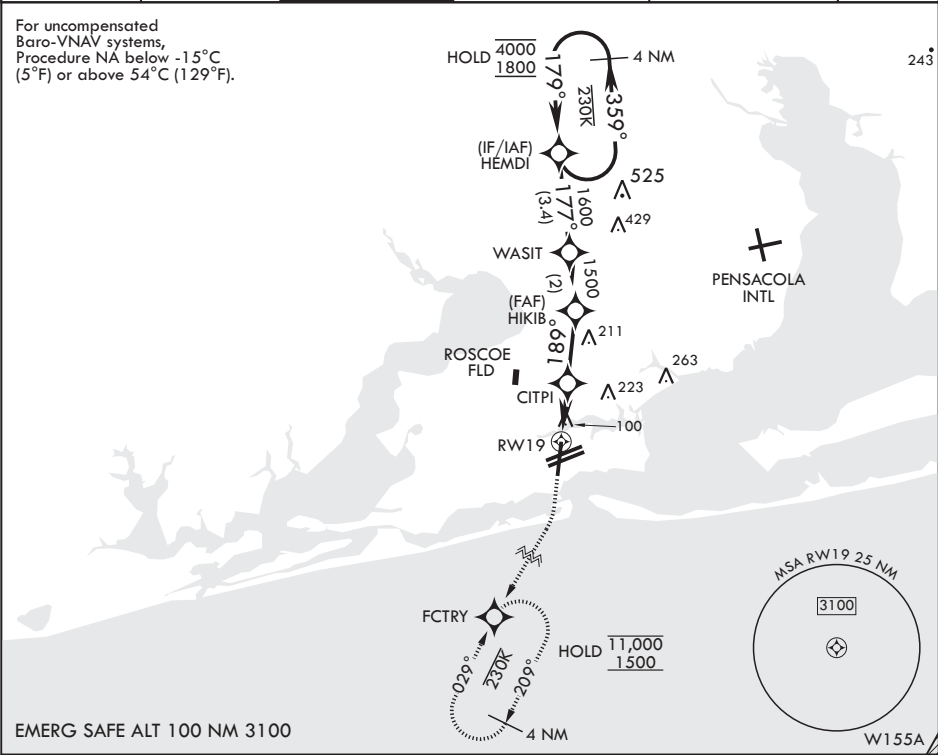
- (USN)

RNAV (GPS) RWY 19

PENSACOLA NAS (FORREST SHERMAN FLD) (KNPA)

RNP APCH-GPS	MISSED APPROACH: Climb to 800 then climbing right turn to 1500 direct FCTRY and hold.
RADAR required	

ATIS 124.35 266.8	APP CON 120.65 270.8	SHERMAN TOWER 120.7 340.2	SHERMAN GND CON 121.7 336.4	SHERMAN CLNC DEL 134.1 268.7	ASR/PAR
----------------------	-------------------------	------------------------------	--------------------------------	---------------------------------	---------



CATEGORY	A	B	C	D	E
LNAV/VNAV DA	272-1	250 (300-1)	275-1 253 (300-1)	296-1 274 (300-1)	380-1 358 (400-1)
LNAV MDA	440-1	418 (500-1)	440-1½ 512 (600-1½)	418 572 (600-2)	418 (500-1½) 640-2¼ 612 (700-2¼)
CIRCLING	520-1	492 (500-1)	540-1½ 512 (600-1½)	600-2 572 (600-2)	640-2¼ 612 (700-2¼)

PENSACOLA, FLORIDA

30°21'N - 87°19'W PENSACOLA NAS (FORREST SHERMAN FLD) (KNPA)

Amdt 6 12JUN25

RNAV (GPS) RWY 19

SE-3, 10 JUL 2025 to 07 AUG 2025

SE-3, 10 JUL 2025 to 07 AUG 2025