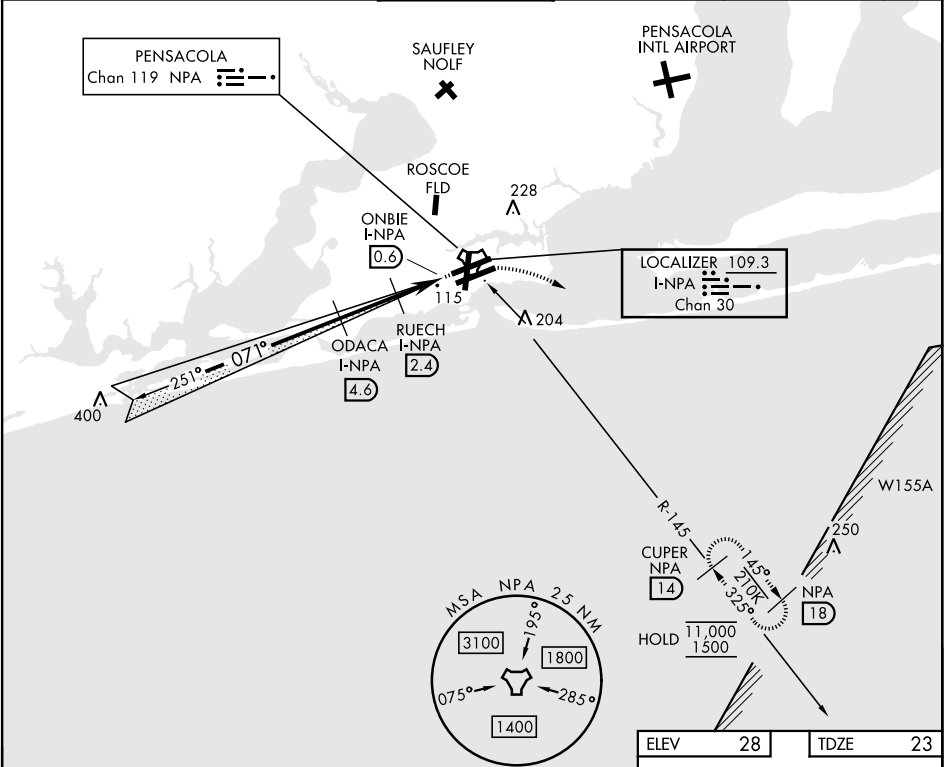


ILS Z or LOC Z RWY 7L

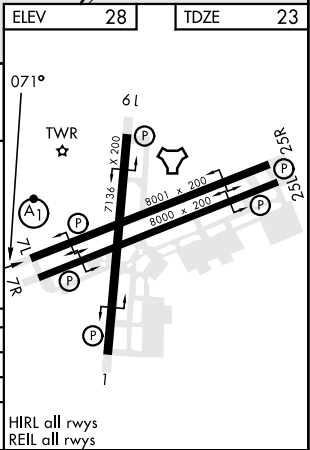
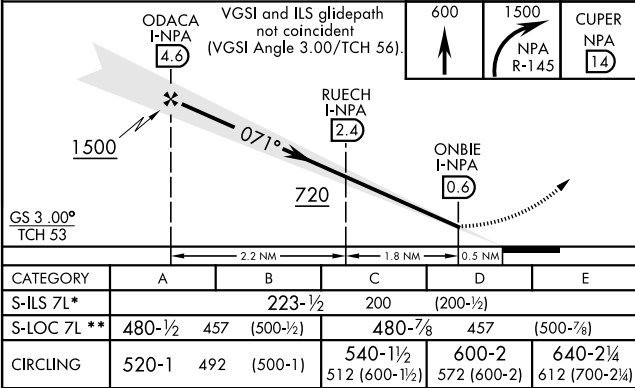
LOC/DME I-NPA 109.3 Chan 30	APCH CRS 071°	Rwy Idg TDZE 23 Arpt Elev 28
---	-------------------------	--

[USN] PENSACOLA NAS (FORREST SHERMAN FLD) (KNPA)

RADAR, TACAN, and DME required. * When ALS inop, increase vis to ¾ mile. ** When ALS inop, increase vis to 1 mile.			ALSF-1 	MISSED APPROACH: Climb to 600. Then climbing right turn to 1500 via NPA R-145 to CUPER and hold.	
ATIS 124.35 266.8	APP CON 120.65 270.8	SHERMAN TOWER 120.7 340.2	GND CON 121.7 336.4	CLNC DEL 134.1 268.7	ASR/ PAR



EMERG SAFE ALT 100 NM 3100



ILS Z or LOC Z RWY 7L

SE-3, 10 JUL 2025 to 07 AUG 2025

SE-3, 10 JUL 2025 to 07 AUG 2025