

PENSACOLA, FLORIDA

ILS or RNAV (GPS) Y RWY 7L

LOC/DME I-NPA 109.3 Chan 30	APCH CRS 071°	Rwy Idg TDZE Arpt Elev 8001 23 28
---	-------------------------	---

[USN]

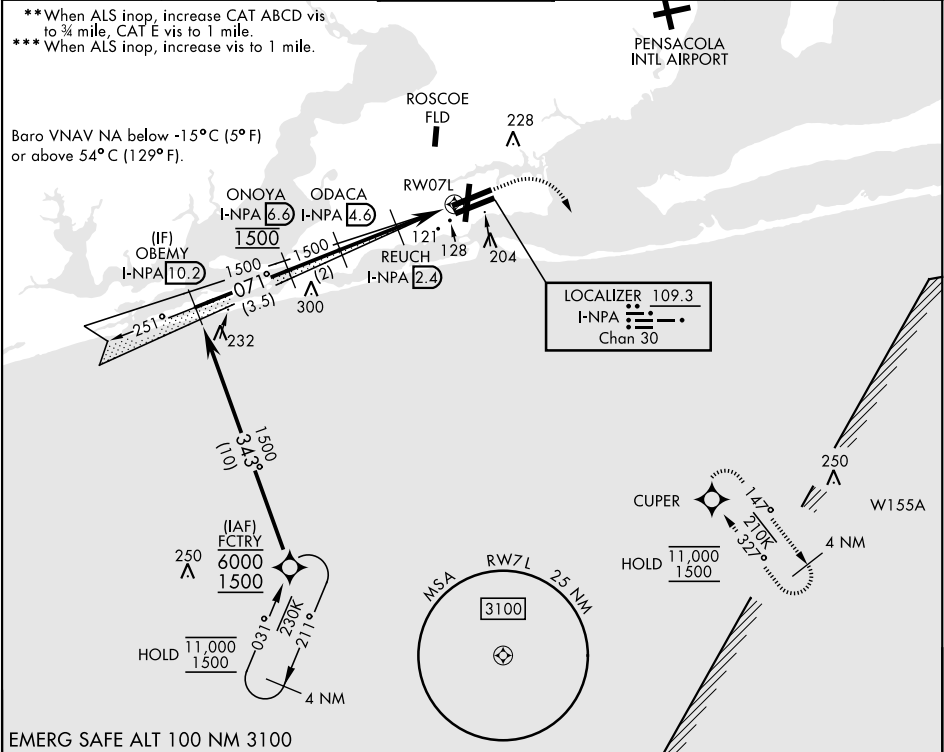
PENSACOLA NAS (FORREST SHERMAN FLD) (KNPA)

RNP APCH - GPS
RADAR required
▼ * When ALS inop, increase vis to ¾ mile.



MISSED APPROACH: Climb to 600, then climbing right turn to 1500 direct CUPER and hold.

ATIS 124.35 266.8	APP CON 120.65 270.8	SHERMAN TOWER 120.7 340.2	GND CON 121.7 336.4	CLNC DEL 134.1 268.7	ASR/ PAR
-----------------------------	--------------------------------	-------------------------------------	-------------------------------	--------------------------------	-------------



EMERG SAFE ALT 100 NM 3100

OBEMY I-NPA 10.2		ONoya I-NPA 6.6	ODACA I-NPA 4.6	RUECH I-NPA 2.4	CUPER	ELEV 28	TDZE 23
1500		1500	1500	780	0.9 NM to RW07L	TWR 133	
GS 3.00° TCH 53		071°		2.2 NM		7136 71200	
CATEGORY	A	B	C	D	E	071°	
S-ILS 7L *	223-½		200	(200-½)		1	
LNAV/VNAV DA**	274-½		251 (300-½)	283-½	377-⅝	HIREL all rwy's	
LNAV MDA***	380-½		357 (400-½)	380-⅝	357 (400-⅝)	REIL all rwy's	
CIRCLING	520-1	492 (500-1)	540-1½	600-2	640-2¼		
			512 (600-1½)	572 (600-2)	612 (700-2¼)		

PENSACOLA, FLORIDA

30°21'N-87°19'W

PENSACOLA NAS (FORREST SHERMAN FLD) (KNPA)

Amcl 6 10JUL25

ILS or RNAV (GPS) Y RWY 7L

SE-3, 10 JUL 2025 to 07 AUG 2025

SE-3, 10 JUL 2025 to 07 AUG 2025