

HI-VOR Z RWY 19

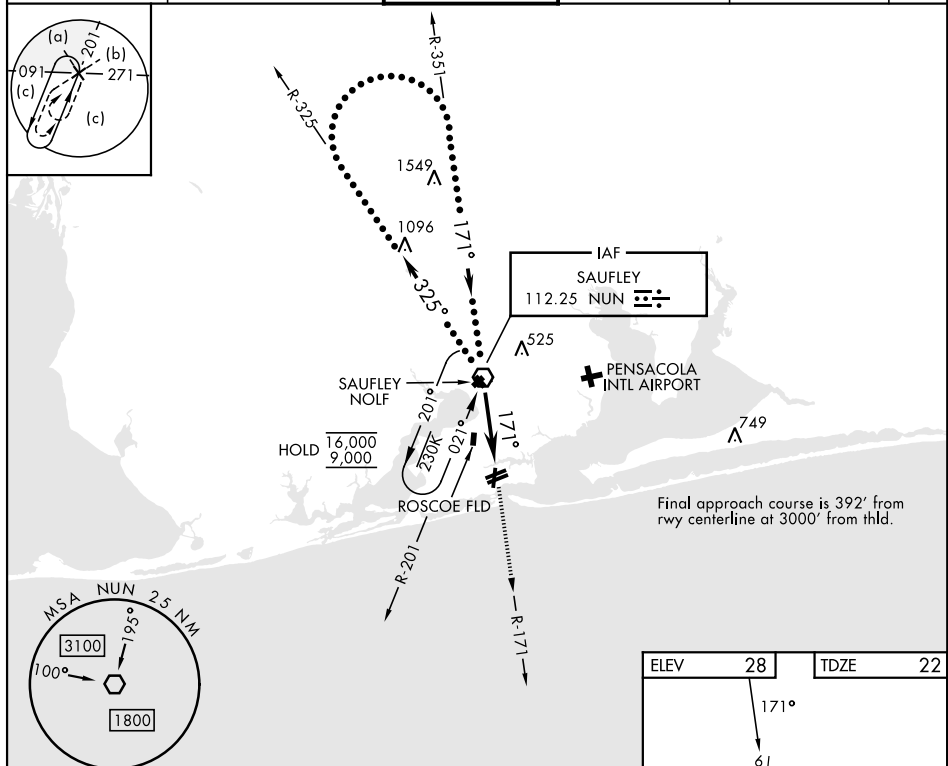
VOR NUN 112.25	APCH CRS 171°	Rwy Idg 7136 TDZE 22 Arpt Elev 28	[USN]	PENSACOLA NAS (FORREST SHERMAN FLD) (KNPA)
--------------------------	-------------------------	--	-------	--

RADAR required

T Procedure not available when Pensacola South Military Operating Area (MOA) is active.

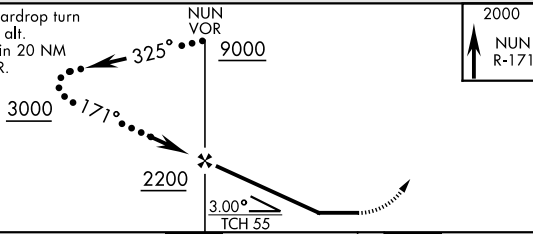
MISSED APPROACH: Climb to 2000 via NUN VOR R-171. Expect RADAR vectors within 3 NM of MAP.

ATIS 124.35 266.8	PENSACOLA APP CON 120.65 270.8	SHERMAN TOWER 120.7 340.2	GND CON 121.7 336.4	CLNC DEL 134.1 268.7	ASR/ PAR
----------------------	-----------------------------------	------------------------------	------------------------	-------------------------	-------------



EMERG SAFE ALT 100 NM 3100

Start right teardrop turn
at 9000 min alt.
Remain within 20 NM
of NUN VOR.



CATEGORY		C	D	E	HIRL all rwy's REIL all rwy's						
S-19		540-1 $\frac{3}{8}$ 518 (600-1 $\frac{3}{8}$)			FAF to MAP 6.0 NM						
CIRCLING	540-1 $\frac{1}{2}$ 512 (600-1 $\frac{1}{2}$)	600-2 572 (600-2)	640-2 $\frac{1}{4}$ 612 (700-2 $\frac{1}{4}$)			Knots	120	140	160	180	200
							Min:Sec	3:00	2:34	2:15	2:00

HIRL all rwys
REIL all rwys

FAF to MAP 6.0 NM

Knots	120	140	160	180	200
Min:Sec	3:00	2:34	2:15	2:00	1:48