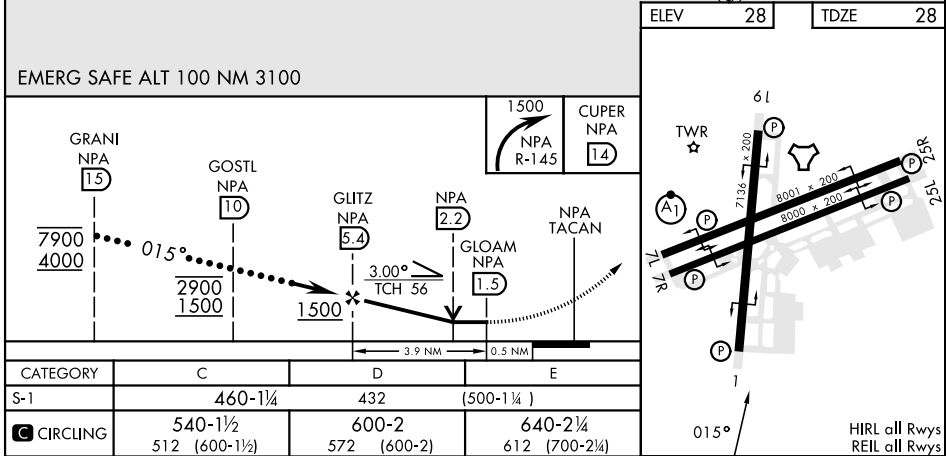
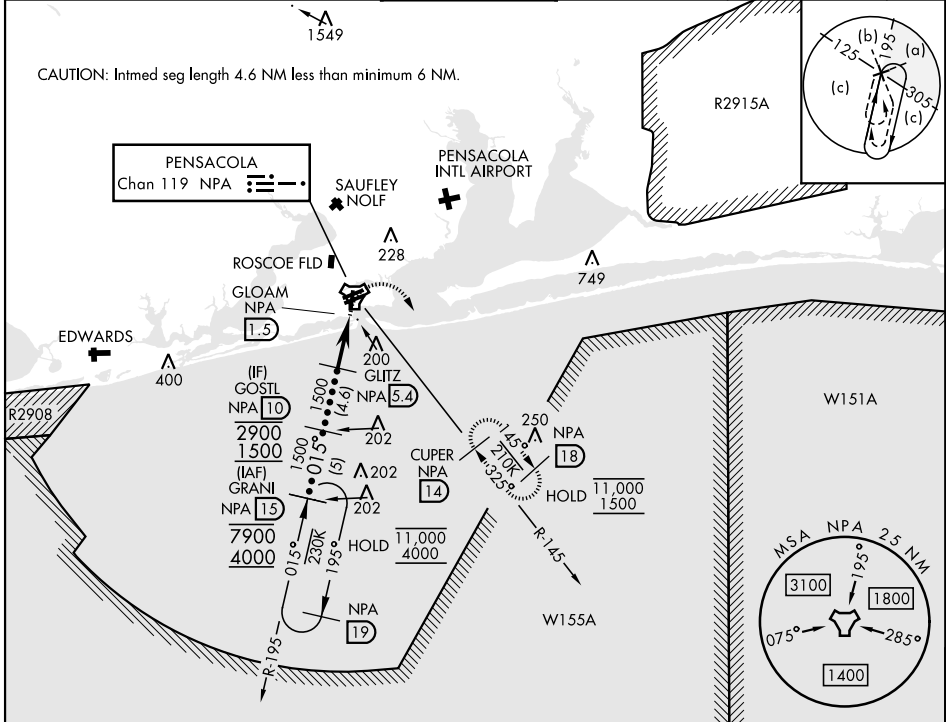


HI-TACAN Z RWY 1

TACAN NPA Chan 119	APCH CRS 015°	Rwy Idg 7136 TDZE 28 Arpt Elev 28	[USN] PENSACOLA NAS (FORREST SHERMAN FLD) (KNPA)
-----------------------	------------------	--	--

RADAR required		MISSED APPROACH: Climbing right turn to 1500 via NPA TACAN R-145 to CUPER and hold.		
ATIS 124.35 266.8	PENSACOLA APP CON 120.65 270.8	SHERMAN TOWER 120.7 340.2	GND CON 121.7 336.4	CLNC DEL 134.1 268.7
		ASR/ PAR		



HI-TACAN Z RWY 1

SE-3, 10 JUL 2025 to 07 AUG 2025