

RNAV (GPS) RWY 36

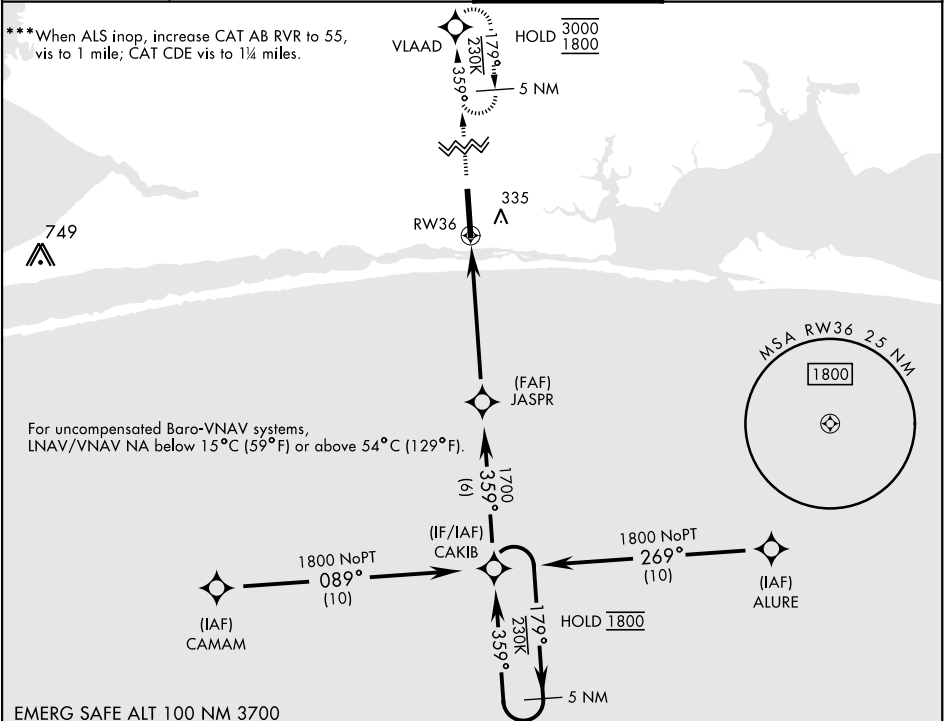
SBAS	APCH CRS	Rwy Idg	9600
Chan 67830	359°	TDZE	37
W36A		Arpt Elev	38

[USAF]

HURLBURT FLD (KHRT)

RNP APCH	ALSIF-1	MISSED APPROACH: Climb to 3000 direct VLAAD and hold.
* When ALS inop, increase RVR to 40, vis to ¾ mile. ** When ALS inop, increase RVR to 45, vis to ⅞ mile.		

ATIS	EGLIN APP CON	TOWER	GND CON
134.475 360.675	125.1 281.45 (271° - 089°) 132.1 360.6 (090° - 270°)	126.5 351.675	123.975 275.8



3000	VLAAD	VGSI and RNAV glidepath not coincident (VGSI Angle 2.50/TCH 54).	5 NM Holding Pattern	ELEV	38	TDZE	37
CATEGORY	A	B	C	D	E		
LPV DA *	237/24		200	(200-½)			
LNAV/VNAV DA **	327/24 290 (300-½)	338/24 301 (300-½)	346/24 309 (400-½)	357/24	320 (400-½)		
LNAV MDA ***	460/24	423 (500-½)	460/40	423	(500-¾)		
CIRCLING	640-1	602 (700-1)	640-1¾ 602 (700-1¾)	840-2½ 802 (900-2½)	840-2¾ 802 (900-2¾)		

HELICOPTER HOVER SPOTS

TWR ☆

HIRL Rwy 18-36

RNAV (GPS) RWY 36

SE-3, 10 JUL 2025 to 07 AUG 2025

SE-3, 10 JUL 2025 to 07 AUG 2025