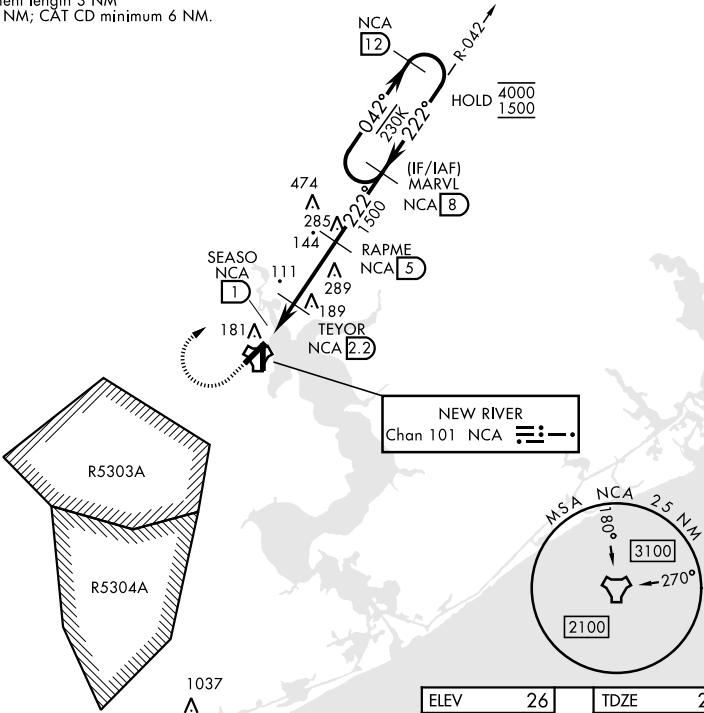


TACAN RWY 23

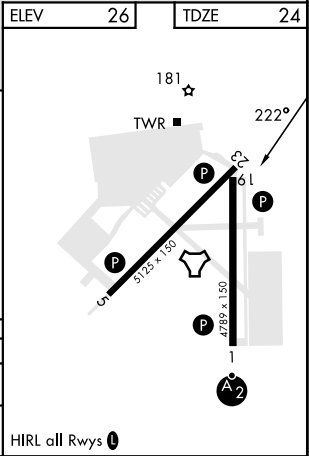
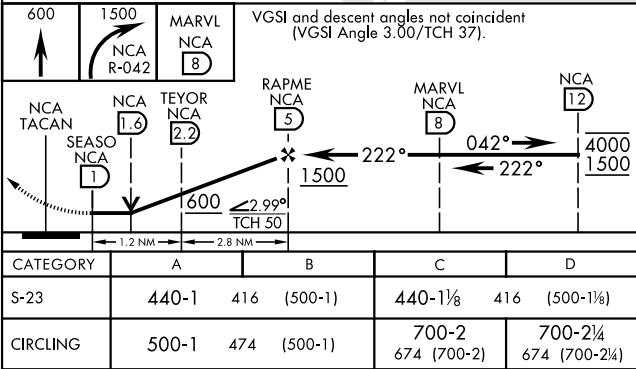
TACAN NCA Chan 101	APCH CRS 222°	Rwy Idg 5125 TDZE 24 Arpt Elev 26	[USN] NEW RIVER MCAS (MCCUTCHEON FLD) (KNCA)		
RADAR required			MISSED APPROACH: Climb to 600 then climbing right turn to 1500, intercept NCA TACAN R-042 to MARVL and hold.		
ATIS ★ 288.325	CHERRY POINT APP CON 119.35 377.175	TOWER ★ 134.95 (CTAF) 0★ 360.2	GND CON 121.8 254.275	CLNC DEL 269.25	ASR/PAR

135

CAUTION: Intermediate segment length 3 NM
less than CAT AB minimum 5 NM; CAT CD minimum 6 NM.



EMERG SAFE ALT 100 NM 3400



TACAN RWY 23

SE-2, 10 JUL 2025 to 07 AUG 2025

SE-2, 10 JUL 2025 to 07 AUG 2025