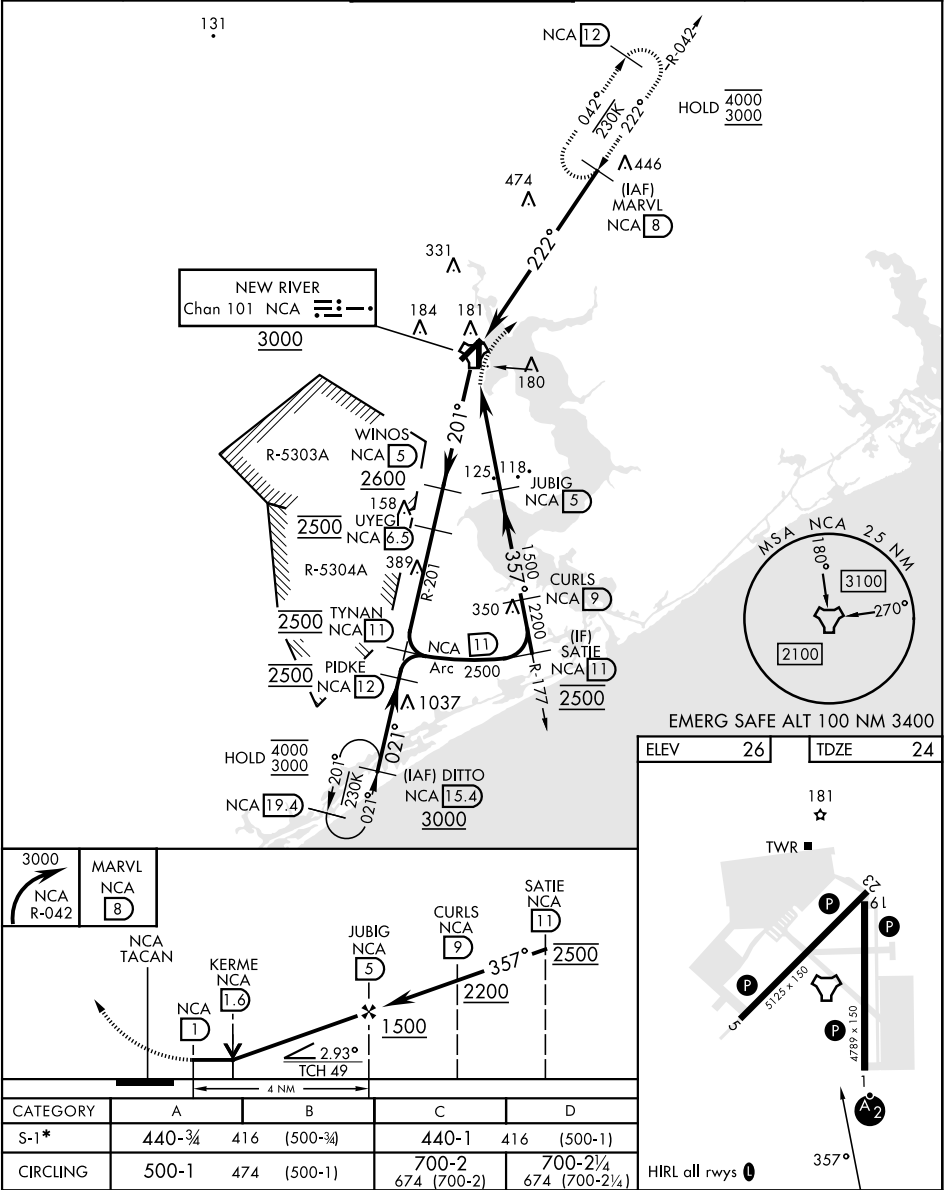


TACAN RWY 1

TACAN NCA Chan 101	APCH CRS 357°	Rwy ldg TDZE Arpt Elev	4789 24 26
RADAR required		[USN]	
* When ALS inop, increase vis CAT AB to 1 mile, CAT CD to 1½ miles.		MISSED APPROACH: Climbing right turn to 3000 direct MARVL (NCA TACAN R-042/ 8 DME) and hold. Continue climb-in-hold to 3000.	
ATIS ★ 288.325	CHERRY POINT APP CON 119.35 377.175	TOWER ★ 134.95(CTAF) 0★ 360.2	GND CON 121.8 254.275
		CLNC DEL 269.25	ASR/PAR



TACAN RWY 1

SE-2, 10 JUL 2025 to 07 AUG 2025

SE-2, 10 JUL 2025 to 07 AUG 2025