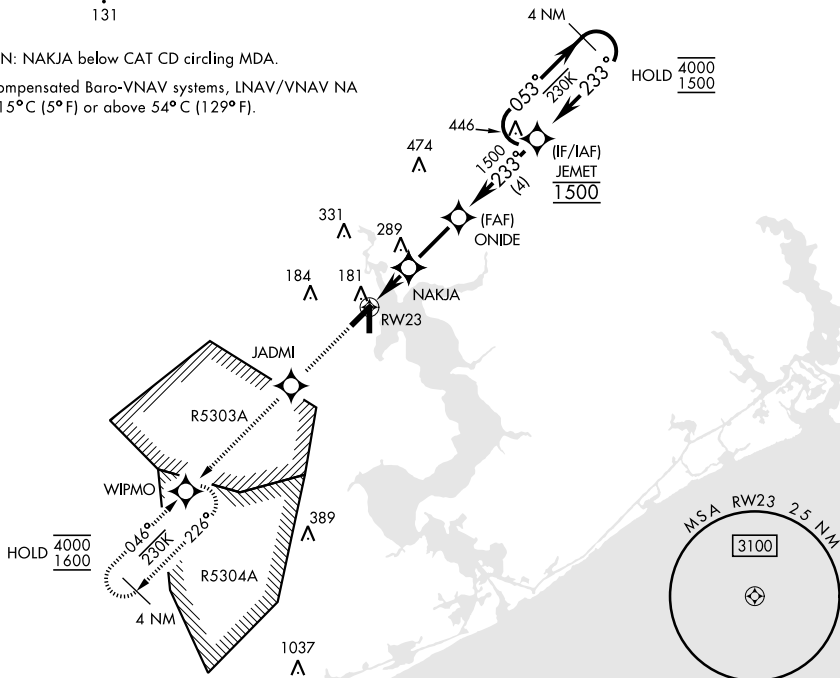


RNAV (GPS) RWY 23

WAAS Chan 92556 W23A		APCH CRS 233°	Rwy Idg 5125 TDZE 24 Arpt Elev 26	[USN]	NEW RIVER MCAS (MCCUTCHEON FLD)		(KNCA)
RNP APCH				MISSED APPROACH: Climb to 1600 direct JADMI, track 233° to WIPMO and hold.			
RADAR required							
ATIS ★ 288.325	CHERRY POINT APP CON 119.35 377.175			TOWER ★ 134.95 (CTAF) 0★ 360.2	GND CON 121.8 254.275	CLNC DEL 269.25	ASR/PAR

CAUTION: NAKJA below CAT CD circling MDA.

For uncompensated Baro-VNAV systems, LNAV/VNAV NA below -15°C (5°F) or above 54°C (129°F).



EMERG SAFE ALT 100 NM 3400

