

JACKSONVILLE, NORTH CAROLINA

RNAV (GPS) RWY 19

APCH CRS	Rwy Idg	4789
188°	TDZE	23
	Arpt Elev	26

[USN] NEW RIVER MCAS (MCCUTCHEON FLD) (KNCA)

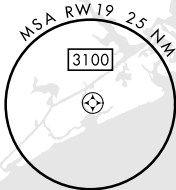
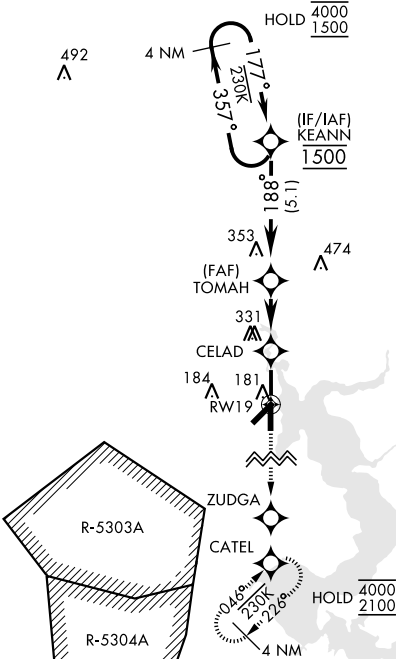
RNP APCH
RADAR required

MISSED APPROACH: Climb to 2100 direct ZUDGA, direct CATEL and hold.

ATIS ★ 288.325	CHERRY POINT APP CON 119.35 377.175	TOWER ★ 134.95(CTAF) 0★ 360.2	GND CON 121.8 254.275	CLNC DEL 269.25	ASR/PAR
-------------------	--	----------------------------------	--------------------------	--------------------	---------

*154

Baro VNAV NA below -15°C (5°F)
and above 54°C (129°F).



EMERG SAFE ALT 100 NM 3400

2100	ZUDGA	CATEL	VGSI and descent angles not coincident (VGSI Angle 3.00/TCH 41)	ELEV 26	TDZE 23
↑	✧	⊙			
CATEGORY	A	B	C	D	
LNAV/ VNAV DA	313-7/8 290 (300-7/8)	323-7/8 300 (300-7/8)	331-7/8 308 (400-7/8)	342-7/8 319 (400-7/8)	
LNAV MDA	440-1 417 (500-1)	440-1 1/8 417 (500-1 1/8)	700-2 674 (700-2)	700-2 1/4 674 (700-2 1/4)	
CIRCLING	500-1 474 (500-1)				
HIRL all Rwy's 1					

JACKSONVILLE, NORTH CAROLINA

34° 43'N-77° 26'W

NEW RIVER MCAS (MCCUTCHEON FLD) (KNCA)

Amdt 6 10JUL25

RNAV (GPS) RWY 19

SE-2, 10 JUL 2025 to 07 AUG 2025

SE-2, 10 JUL 2025 to 07 AUG 2025