
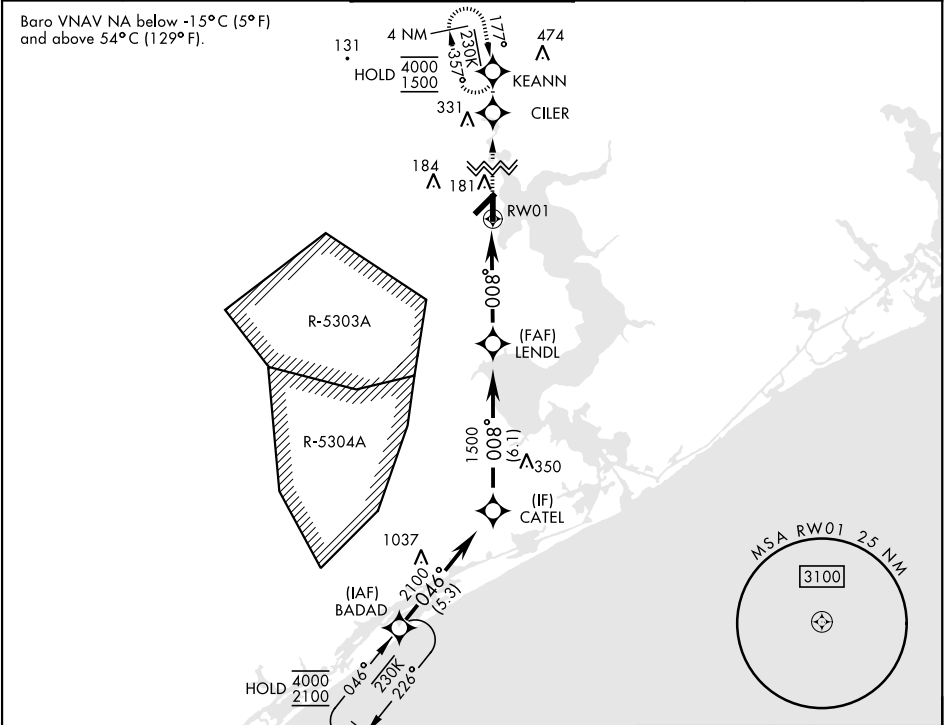





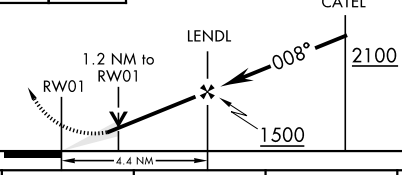
JACKSONVILLE, NORTH CAROLINA

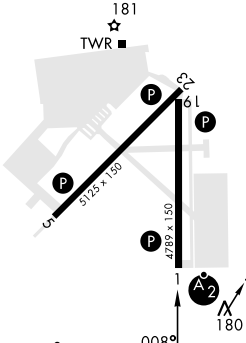
RNAV (GPS) RWY 1

APCH CRS 008°	Rwy Ldg THRE Arpt Elev	4789 24 26	[USN]	NEW RIVER MCAS (MCCUTCHEON FLD)	(KNCA)
RNP APCH			SALSF 	MISSED APPROACH: Climb to 1500 direct CILER, 008° track to KEANN and hold.	
RADAR required					
** When ALS inop, increase vis to 7/8 mile. ** When ALS inop, increase vis CAT AB to 1 mile, CAT CD to 1 1/8 miles.					

ATIS ★ 288.325	CHERRY POINT APP CON 119.35 377.175	TOWER ★ 134.95(CTAF) ★ 360.2	GND CON 121.8 254.275	CLNC DEL 269.25	ASR/PAR
-------------------	--	---------------------------------	--------------------------	--------------------	---------



EMERG SAFE ALT 100 NM 3400				ELEV 26		THRE 24	
1500 	CILER 	KEANN 	VGSI and descent angles not coincident (VGSI Angle 3.00/TCH 46)				
							
CATEGORY	A		B		C	D	
LNAV/ VNAV DA *	311-¾ 287 (300-¾)		322-¾ 298 (300-¾)		330-¾ 306 (400-¾)	341-¾ 317 (400-¾)	
LNAV MDA **	440-¾ 416 (500-¾)		440-1 416 (500-1)		700-2 674 (700-2)		
CIRCLING	500-1 474 (500-1)		700-2 674 (700-2)		700-2½ 674 (700-2½)		



HIRL all Rwy 1 008°

JACKSONVILLE, NORTH CAROLINA 34° 43'N-77° 26'W NEW RIVER MCAS (MCCUTCHEON FLD) (KNCA)

Amtd 6 10JUL25

RNAV (GPS) RWY 1

SE-2, 10 JUL 2025 to 07 AUG 2025

SE-2, 10 JUL 2025 to 07 AUG 2025