

APP CRS	Rwy Idg	5300
069°	TDZE	1722
	Apt Elev	1723

RNAV (GPS) RWY 7

CHAUTAUQUA COUNTY/JAMESTOWN (JHW)

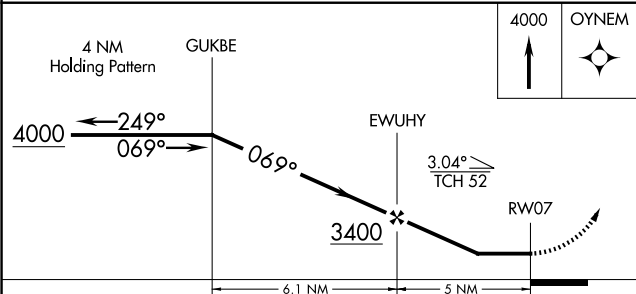
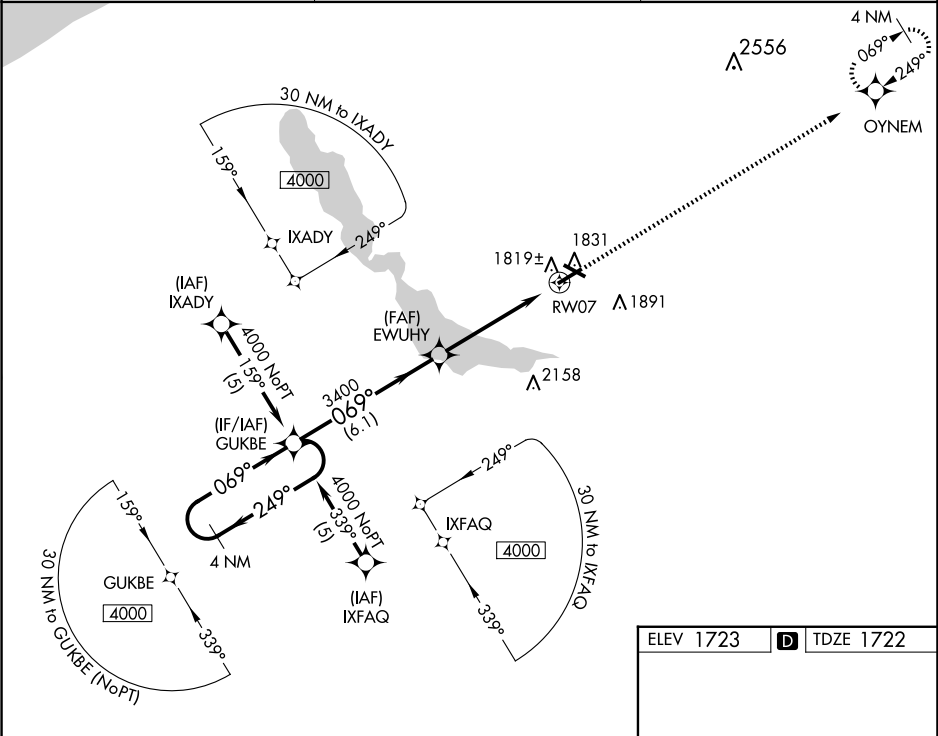
RNP APCH-GPS.

▼

Helicopter visibility reduction below 1 SM NA. When local altimeter setting not received, use Dunkirk altimeter setting: increase all MDAs 200 feet and visibility LNAV Cats C/D ½ SM, Circling Cat C ½ SM and Circling Cat D ¾ SM. Rwy 7 Straight-in/Circling and Circling to Rwy 13/31 NA at night.

MISSED APPROACH: Climb to 4000 direct OYNEM and hold.

AWOS-3PT 118.425	BUFFALO APP CON ★ 126.05	UNICOM 122.975 (CTAF) ①
---------------------	-----------------------------	----------------------------



ELEV 1723	TDZE 1722
<p>Diagram showing the intersection of RWY 7 and RWY 13/31. RWY 7 is 5300 x 100 ft and RWY 13/31 is 4499 x 100 ft. The intersection is marked with a 1790 ft obstacle and a 0.4% UP slope.</p>	
REIL Rwy 31 ①	
MIRL Rwy 13-31 ①	
HIRL Rwy 7-25 ①	