

WAAS CH 62910 W25A	APP CRS 249°	Rwy Idg TDZE Apt Elev	5300 1721 1723
--	------------------------	-----------------------------	---

RNAV (GPS) RWY 25

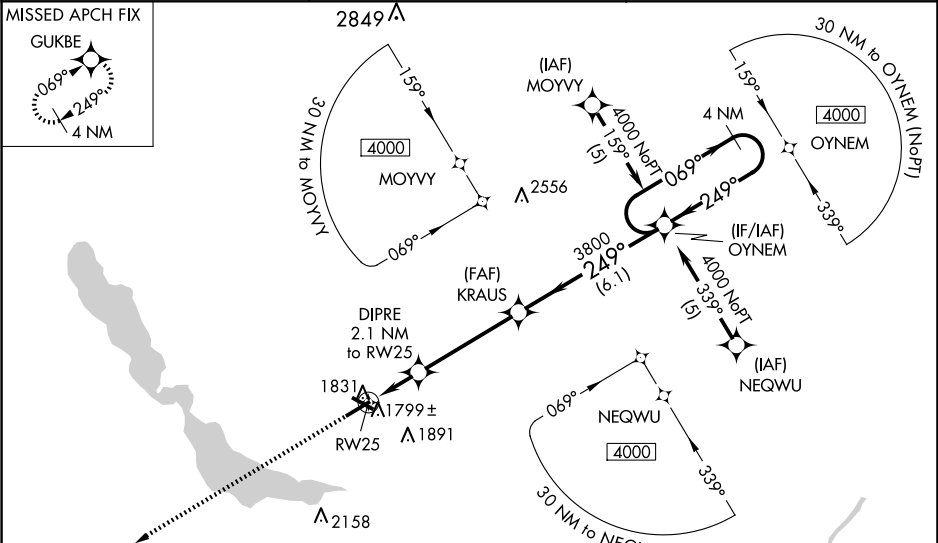
CHAUTAUQUA COUNTY/JAMESTOWN (JHW)

RNP APCH-GPS.
For uncompensated Baro-VNAV systems, LNAV/VNAV NA below -18°C or above 54°C. When local altimeter setting not received, use Dunkirk altimeter setting: increase LPV DA to 2113 feet and visibility all Cats ½ SM; all Cats ½ SM, LNAV/VNAV DA to 2246 feet and visibility all Cats ½ SM; increase all MDAs 200 feet and visibility LNAV Cat C ½ SM, LNAV Cat D ¼ SM, Circling Cat C ½ SM and Circling Cat D ¾ SM. For inoperative MALSR, increase LNAV Cat D visibility to 1¼ mile. For inoperative MALSR when using Dunkirk altimeter setting, increase LPV all Cats visibility to 1½ mile. Baro-VNAV and VDP NA when using Dunkirk altimeter setting. Circling to Rwy 13/31 NA at night.

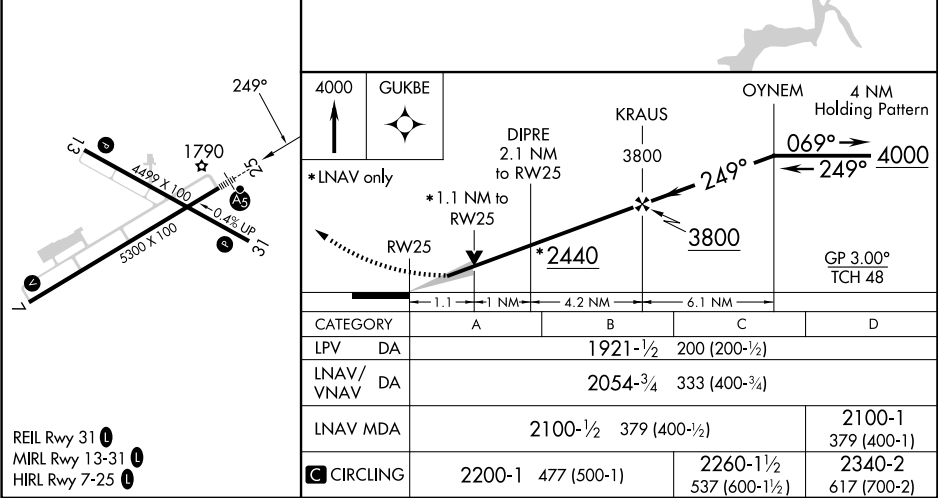
MALSR

MISSED APPROACH:
Climb to 4000 direct GUKBE and hold.

AWOS-3PT 118.425	BUFFALO APP CON * 126.05	UNICOM 122.975 (CTAF) 0
----------------------------	------------------------------------	-----------------------------------



ELEV 1723	D	TDZE 1721
-----------	----------	-----------



- REIL Rwy 31 0
- MIRL Rwy 13-31 0
- HIRL Rwy 7-25 0