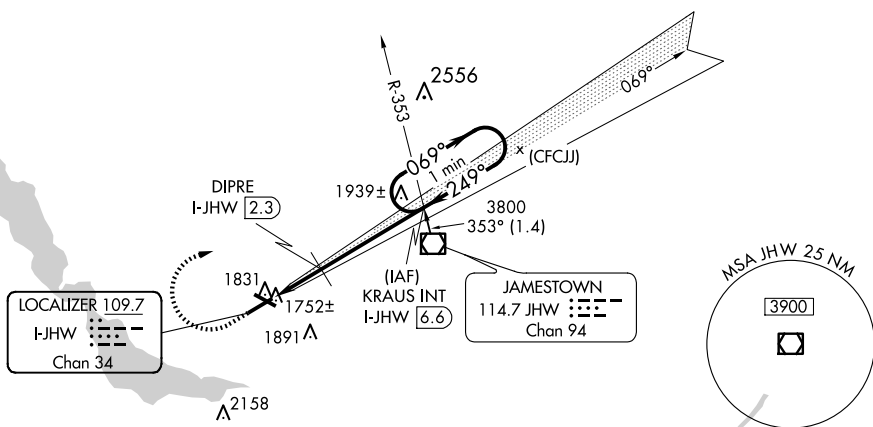


ILS or LOC RWY 25
CHAUTAUQUA COUNTY/JAMESTOWN (JHW)

MISSED APPROACH: Climb to 2420 then climbing right turn to 3800 on heading 125° and I-JHW LOC course NE to KRAUS INT/I-JHW 6.6 DME and hold.

UNICOM
122.975 (CTAF) **L**

NE-2, 10 JUL 2025 to 07 AUG 2025

2420 ↑	3800 hdg 125°	LOC crs NE	KRAUS INT	KRAUS INT I-JHW [6.6]	One Minute Holding Pattern
CATEGORY	A		B	C	D
S-ILS 25	1971-½		250 (300-½)		
S-LOC 25	2420-½ 699 (700-½)		2420-1½ 699 (700-½)		
CIRCLING	2420-1 697 (700-1)		2420-2 697 (700-2)	2420-2¼ 697 (700-2¼)	
DIPRE FIX MINIMUMS (DME REQUIRED)					
S-LOC 25	2080-½ 359 (400-½)		2080-⅝ 359 (400-⅝)		
CIRCLING	2200-1 477 (500-1)		2260-1½ 537 (600-1½)	2340-2 617 (700-2)	