

VORTAC OSH
116.75
Chan 114 (Y)

APP CRS
090°

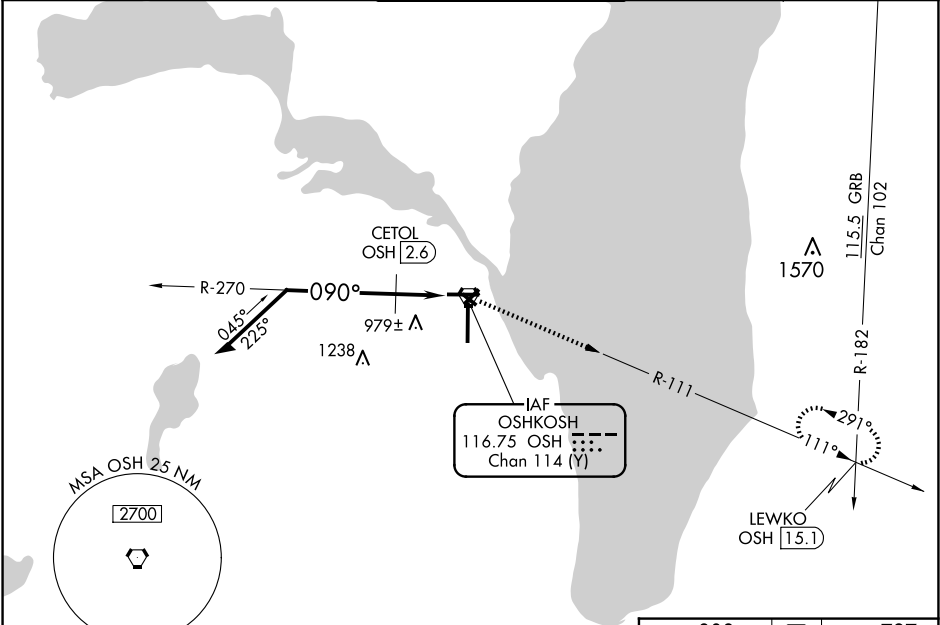
Rwy Idg
TDZE 797
Apt Elev 808

VOR RWY 9
WITTMAN RGNL (OSH)

⚠ Circling to Rwy 5, 23, and 31 NA at night. When local altimeter setting not received, use Fond Du Lac altimeter setting and increase all MDA 40 feet and increase S-9 Cats C and D visibility and Circling Cat C visibility ½ mile and Circling Cat D visibility ¾ mile, increase CETOL fix minimums Circling Cat D visibility ¼ mile. VDP NA with Fond Du Lac altimeter setting. Helicopter visibility reduction below ¾ SM NA.

MISSED APPROACH: Climb to 3000 on OSH VORTAC R-111 to LEWKO INT/OSH 15.1 DME and hold.

ATIS 125.9	MILWAUKEE APP CON 127.0 263.075	OSHKOSH TOWER ★ 118.5 (CTAF) 290.9	GND CON 132.3	UNICOM 122.95
---------------	------------------------------------	---------------------------------------	------------------	------------------



ELEV 808

D

TDZE 797

OSHKOSH VORTAC

3000

LEWKO

Remain within 10 NM

2500

270°

090°

CETOL OSH 2.6

OSH 1.9

*1420

2.84°

TCH 50

0.7 NM

1.2

*1460 when using Fond Du Lac altimeter setting.

CATEGORY	A	B	C	D
S-9	1420-1	623 (700-1)	1420-1¾	623 (700-1¾)
CIRCLING	1420-1	612 (700-1)	1420-1¾	1440-2
		612 (700-1¾)	632 (700-2)	
CETOL FIX MINIMUMS				
S-9	1240-1	443 (500-1)	1240-1¾	443 (500-1¾)
CIRCLING	1280-1	1300-1	1360-1½	1440-2
	472 (500-1)	492 (500-1)	552 (600-1½)	632 (700-2)

REIL Rwy 18 and 27

HIRL Rwy 9-27 and 18-36