

VORTAC OSH	APP CRS	Rwy Idg	8002
116.75	360°	TDZE	808
Chan 114 (Y)		Apt Elev	808

VOR RWY 36

WITTMAN RGNL (OSH)

⚠

⚠

Circling to Rwy 5, 23, and 31 NA at night. When local altimeter setting not received, use Fond Du Lac altimeter setting and increase all MDA 40 feet; increase S-36 Cats C/D visibility and, Circling Cat C visibility ½ mile, increase Circling Cat D visibility ¼ mile, LAUDE fix minimums increase S-36 Cats C/D visibility to RVR 5500 and Circling Cat D visibility to 2¼ mile. For inop MALSR, when using Fond Du Lac altimeter setting, increase LAUDE fix minimums S-36 Cats C/D visibility to 1½ mile. VDP NA with Fond Du Lac altimeter setting.

MALSR

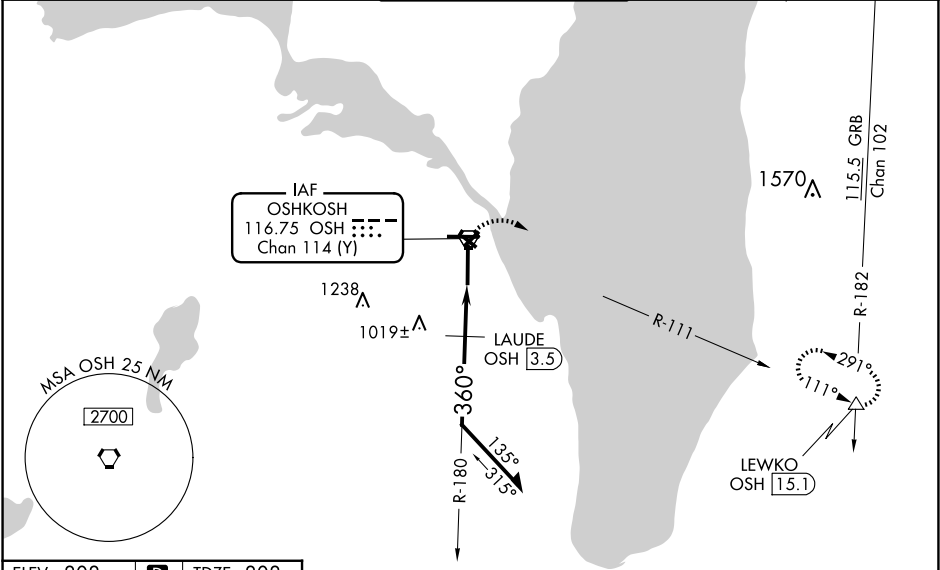
AS

⏏

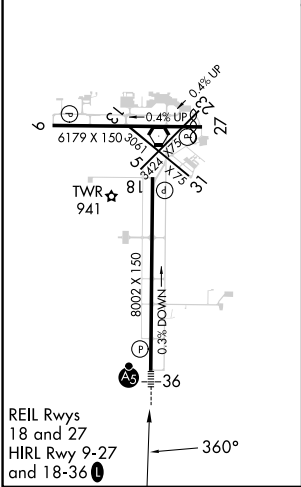
MISSED APPROACH:

Climbing right turn to 3000 on OSH VORTAC R-111 to LEWKO INT/ OSH 15.1 DME and hold.

ATIS	MILWAUKEE APP CON	OSHKOSH TOWER ★	GND CON	UNICOM
125.9	127.0 263.075	118.5 (CTAF) 290.9	132.3	122.95



ELEV 808	D	TDZE 808
----------	---	----------



3000		LEWKO		OSH VORTAC		Remain within 10 NM	
OSH R-111		△		6000		2300	
*1500 when using Fond Du Lac altimeter setting.				OSH 2.9		LAUDE OSH 3.5	
		2.97° TCH 52		360°		*1460	
		1.3 NM		0.6 NM			
CATEGORY	A	B	C	D			
S-36	1460/24	652 (700-½)	1460-1⅓	652 (700-1⅓)			
CIRCLING	1460-1	652 (700-1)	1460-1⅞	652 (700-1⅞)	1460-2	652 (700-2)	
LAUDE FIX MINIMUMS							
S-36	1280/24	472 (500-½)	1280/50	472 (500-1)			
CIRCLING	1280-1	1300-1	1360-1½	1440-2	632 (700-2)		