

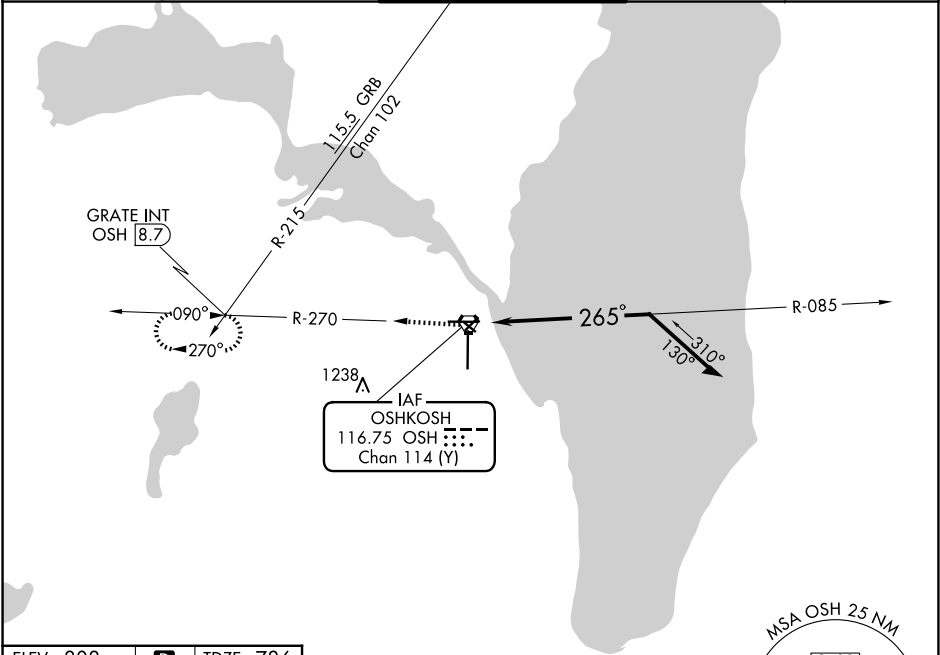
VORTAC OSH 116.75 Chan 114 (Y)	APP CRS 265°	Rwy Idg 5648 TDZE 786 Apt Elev 808
--------------------------------------	-----------------	---

VOR RWY 27  
WITTMAN RGNL (OSH)

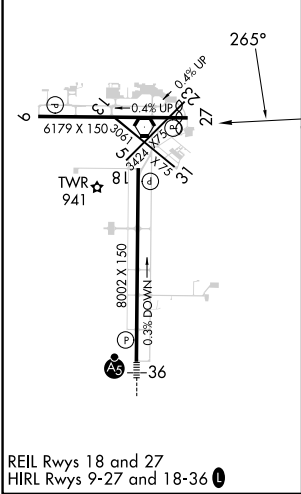
**▼** Circling to Rwy 5, 23, and 31 NA at night. When local altimeter setting not received, use Fond Du Lac altimeter setting and increase all MDA 40 feet; increase S-27 Cats C and D visibility ¼ mile and Circling Cat C visibility ⅛ mile, and Cat D ¼ mile. VDP NA with Fond Du Lac altimeter setting. Helicopter visibility reduction below ¾ SM NA.

**▲** MISSED APPROACH: Climb to 3000 on OSH VORTAC R-270 to GRATE INT/OSH R-270 to GRATE INT/OSH 8.7 DME and hold.

ATIS 125.9	MILWAUKEE APP CON 127.0 263.075	OSHKOSH TOWER ★ 118.5 (CTAF) 290.9	GND CON 132.3	UNICOM 122.95
---------------	------------------------------------	---------------------------------------	------------------	------------------



ELEV 808	D	TDZE 786
----------	---	----------



OSHKOSH, WISCONSIN  
Amdt 5A 02APR15

WITTMAN RGNL (OSH)  
VOR RWY 27

43°59'N-88°33'W

EC-3, 10 JUL 2025 to 07 AUG 2025

EC-3, 10 JUL 2025 to 07 AUG 2025