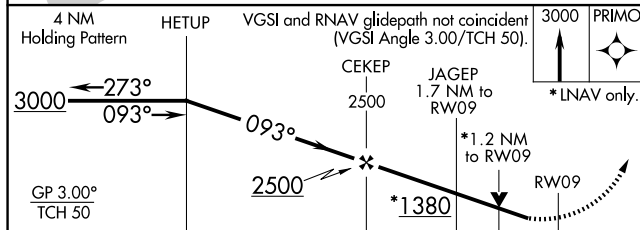
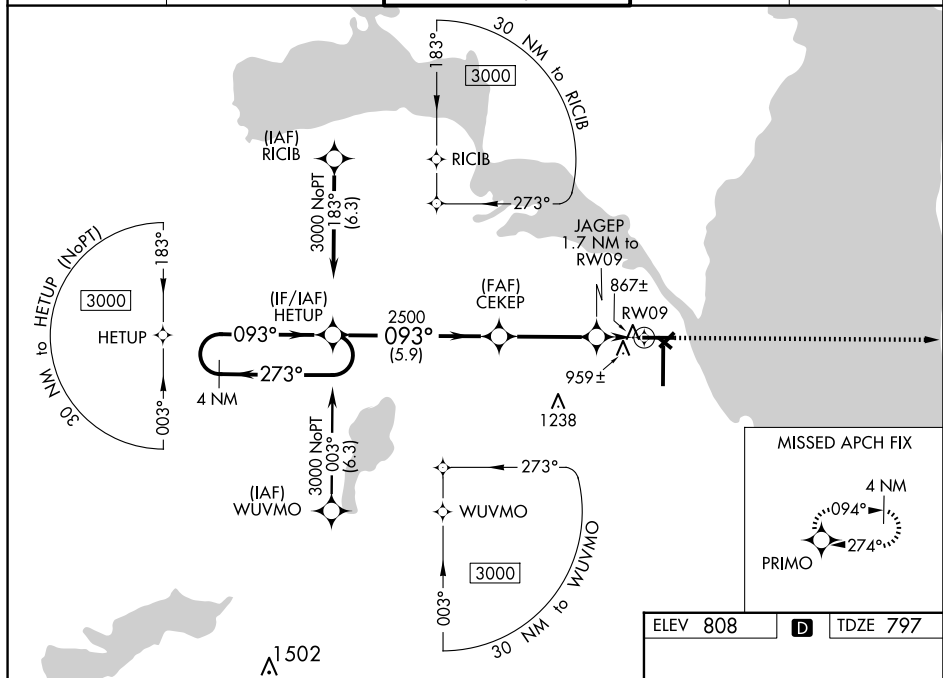

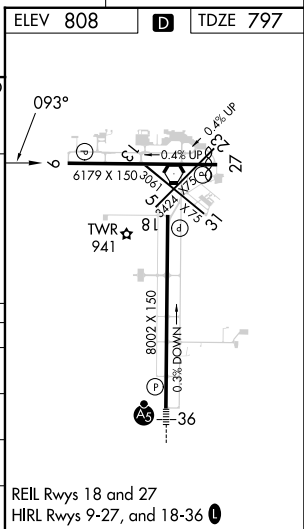


RNAV (GPS) RWY 9
WITTMAN RGNL (OSH)

MISSED APPROACH:
Climb to 3000 direct
PRIMO and hold.

UNICOM
122.95

		5.9 NM		3.5 NM		0.5		1.2 NM			
CATEGORY		A		B		C		D			
LPV	DA	1055- 3_4				258 (300- 3_4)					
LNAV/ VNAV	DA	1140-1 $\frac{1}{8}$				343 (400-1 $\frac{1}{8}$)					
LNAB MDA		1220-1 423 (500-1)				1220-1 $\frac{1}{4}$ 423 (500-1 $\frac{1}{4}$)					
 CIRCLING		1280-1 472 (500-1)		1300-1 492 (500-1)		1360-1 $\frac{1}{2}$ 552 (600-1 $\frac{1}{2}$)		1440-2 632 (700-2)			



EC-3, 10 JUL 2025 to 07 AUG 2025