

WAAS CH 58333 W18A	APP CRS 184°	Rwy Idg 8002 TDZE 794 Apt Elev 808
--	------------------------	---

RNAV (GPS) RWY 18

WITTMAN RGNL (OSH)

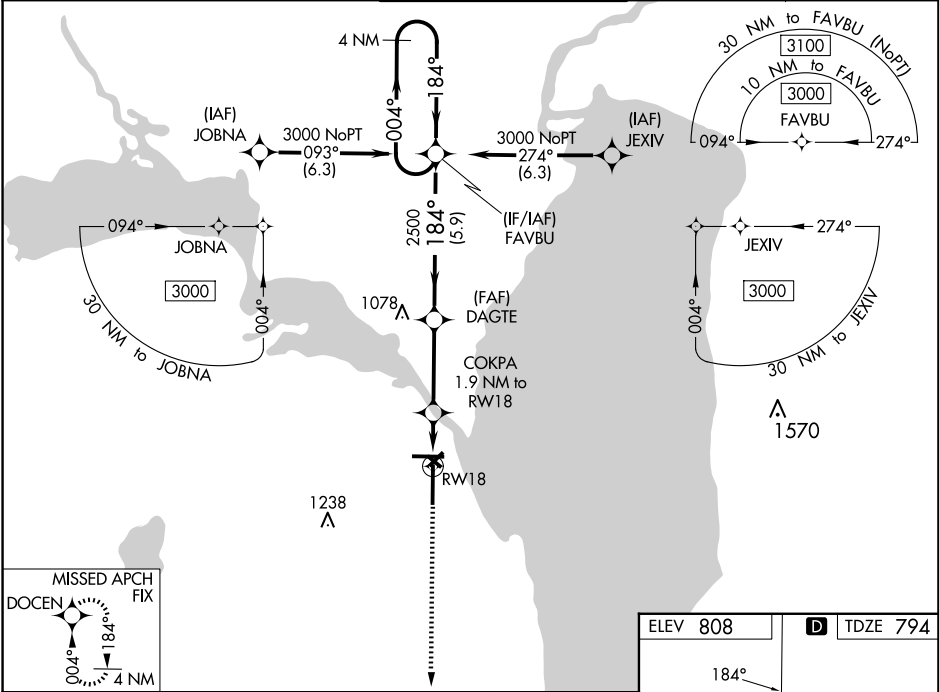
⚠


⚠

For uncompensated Baro-VNAV systems, LNAV/VNAV NA below -20°C (-4°F) or above 54°C (130°F). VDP and Baro-VNAV NA when using Fond Du Lac altimeter setting. When local altimeter setting not received, use Fond Du Lac altimeter setting and increase all DA 31 feet and all MDA 40 feet; increase LPV and LNAV/VNAV all Cats visibility 1/8 mile, increase LNAV Cat C/D and Circling Cat D visibility 1/4 mile. Helicopter visibility reduction below 1/4 SM NA. Circling to Rwy 3, 23 and 31 NA at night. DME/DME RNP-0.3 NA.

MISSED APPROACH: Climb to 2800 direct DOCEN and hold.

ATIS 125.9	MILWAUKEE APP CON 127.0 263.075	OSHKOSH TOWER ★ 118.5 (CTAF) 0 290.9	GND CON 132.3	UNICOM 122.95
----------------------	---	--	-------------------------	-------------------------



<div>4 NM Holding Pattern</div> <div>FAVBU</div> <div>DAGTE</div> <div>COKPA 1.9 NM to RW18</div> <div>2800</div> <div>DOCEN</div>				
<div>3000</div> <div>←004°</div> <div>184°→</div> <div>184°</div> <div>2500</div> <div>*1.1 NM to RW18</div> <div>*1.440</div> <div>RW18</div> <div>*LNAV only.</div>				
<div>GP 3.00° TCH 47</div> <div>5.9 NM</div> <div>3.3 NM</div> <div>0.8 NM</div> <div>1.1 NM</div>				
CATEGORY	A	B	C	D
LPV DA	1044- ³ / ₄ 250 (300- ³ / ₄)			
LNAV/VNAV DA	1122-1 ¹ / ₈ 328 (400-1 ¹ / ₈)			
LNAV MDA	1200-1	406 (400-1)	1200-1 ¹ / ₈	406 (400-1 ¹ / ₈)
 CIRCLING	1280-1 472 (500-1)	1300-1 492 (500-1)	1360-1 ¹ / ₂ 552 (600-1 ¹ / ₂)	1440-2 632 (700-2)

