

LOM OS
395

APP CRS
003°

Rwy Idg
8002
TDZE
808
Apt Elev
808

▼

▲ NA

When local altimeter setting not received, use Fond Du Lac altimeter setting and increase all MDA 40 feet; increase S-36 Cat C/D and Circling Cat C visibilities ½ mile, increase Circling Cat D visibility ¼ mile. For inop MALSR, increase S-36 Cat D visibility to 1½ mile. For inop MALSR when using Fond Du Lac altimeter setting, increase S-36 Cat D visibility to 2 miles. Circling to Rwy 5, 23, and 31 NA at night.

MALSR

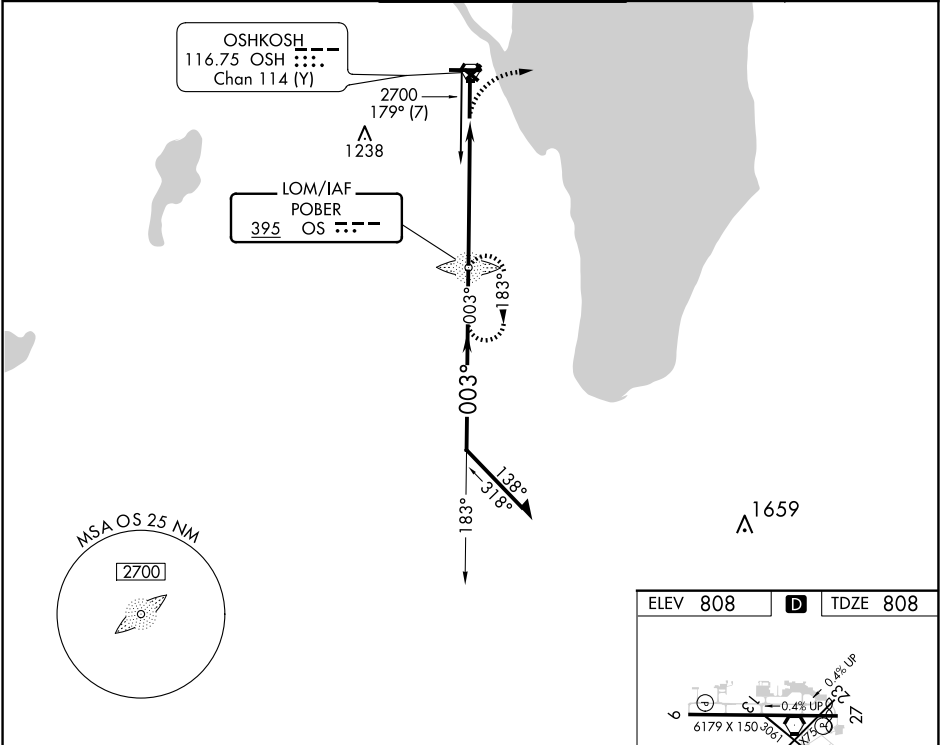
AS

MISSED APPROACH:
Climbing right turn to 3000 on heading 090° then right turn direct POBER LOM and hold.

NDB RWY 36

WITTMAN RGNL (OSH)

ATIS 125.9	MILWAUKEE APP CON 127.0 263.075	OSHKOSH TOWER ★ 118.5 (CTAF) 0 290.9	GND CON 132.3	UNICOM 122.95
----------------------	---	--	-------------------------	-------------------------



Remain within 10 NM

OS LOM

2700

183°

003°

2700

3.21°

TCH 52

5.4 NM

3000

hdg 090°

OS

REIL Rwy 18 and 27

HIRL Rwy 9-27 and 18-36

FAF to MAP 5.4 NM

Knots	60	90	120	150	180
Min:Sec	5:24	3:36	2:42	2:10	1:48