

LOC I-OSH	APP CRS	Rwy Idg	8002
110.5	004°	TDZE	808
		Apt Elev	808

ILS or LOC RWY 36

WITTMAN RGNL (OSH)

▼

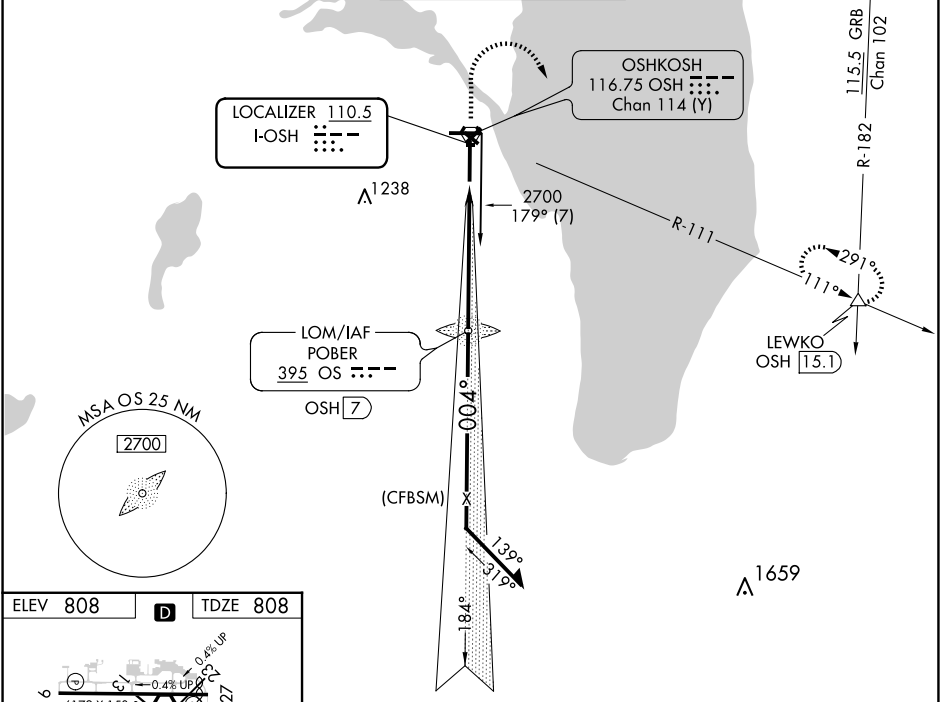
▲

When local altimeter setting not received, use Fond Du Lac altimeter setting and increase DA 31 feet and all MDA 40 feet; increase S-LOC 36 Cat C/D and Circling Cat C/D visibilities ¼ mile. For inop MALSRL when using Fond Du Lac altimeter setting, increase S-LOC 36 Cat C/D visibility to 1½ mile. Circling to Rwy 5, 23, and 31 NA at night.  
\* RVR 1800 authorized with the use of FD or AP or HUD to DA, NA when using Fond Du Lac altimeter setting.

MALSRL

MISSED APPROACH: Climb to 1300 then climbing right turn to 3000 on OSH R-111 to LEWKO INT/OSH 15 DME and hold.

ATIS	MILWAUKEE APP CON	OSHKOSH TOWER ★	GND CON	UNICOM
125.9	127.0 263.075	118.5 (CTAF) 290.9	132.3	122.95



ELEV 808

D

TDZE 808

FAF to MAP 5.4 NM

Knots	60	90	120	150	180
Min:Sec	5:24	3:36	2:42	2:10	1:48

1300	3000	LEWKO	OS LOM OSH 7	Remain within 10 NM
CATEGORY	A	B	C	D
S-ILS 36 *	1008/24 200 (200-½)			
S-LOC 36	1340/24 532 (600-½)		1340/55 532 (600-1)	
<input checked="" type="checkbox"/> CIRCLING	1340-1 532 (600-1)		1360-1½ 552 (600-1½) 1440-2 632 (700-2)	