


WAAS CH 40402 W17A	APP CRS 172°	Rwy Idg 11759 TDZE 234 Apt Elev 234
--	------------------------	--

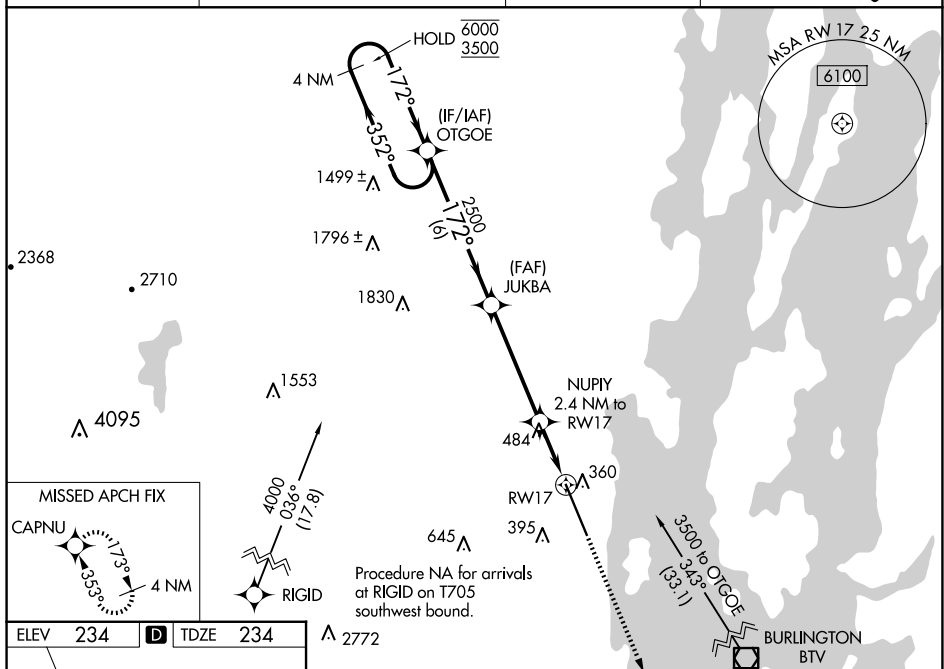
RNAV (GPS) RWY 17
PLATTSBURGH INTL (PBG)

RNP APCH - GPS

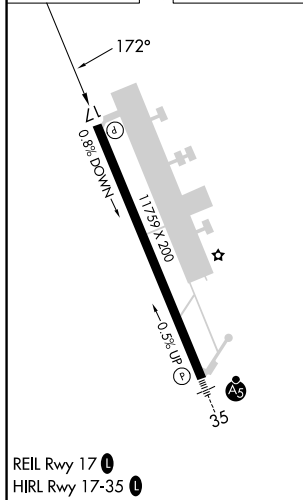
▼ Baro-VNAV and VDP NA when using BTV altimeter setting. When local altimeter not received, use BTV altimeter setting and increase LPV DA to 615 feet at all visibilities $\frac{1}{8}$ SM. Increase UNAV/VNAV DA to 770 feet and all visibilities $\frac{1}{8}$ SM. Increase all MDAs 60 feet and UNAV visibility Cat C/D/E $\frac{1}{4}$ SM, and Circling visibility Cat C/D $\frac{1}{4}$ SM. For uncompensated Baro-VNAV systems, UNAV/VNAV NA below -15°C or above 54°C.

MISSED APPROACH:
Climb to 3000 direct
CAPNU and hold.

ASOS 132.225	BURLINGTON APP CON ★ 121.1 278.8	CLNC DEL 121.85	UNICOM 122.7 (CTAF) 
-----------------	-------------------------------------	--------------------	--



ELEV	234	D	TDZE	234
------	-----	----------	------	-----

[illegible]

NE-2, 10 JUL 2025 to 07 AUG 2025

NE-2. 10 JUL 2025 to 07 AUG 2025