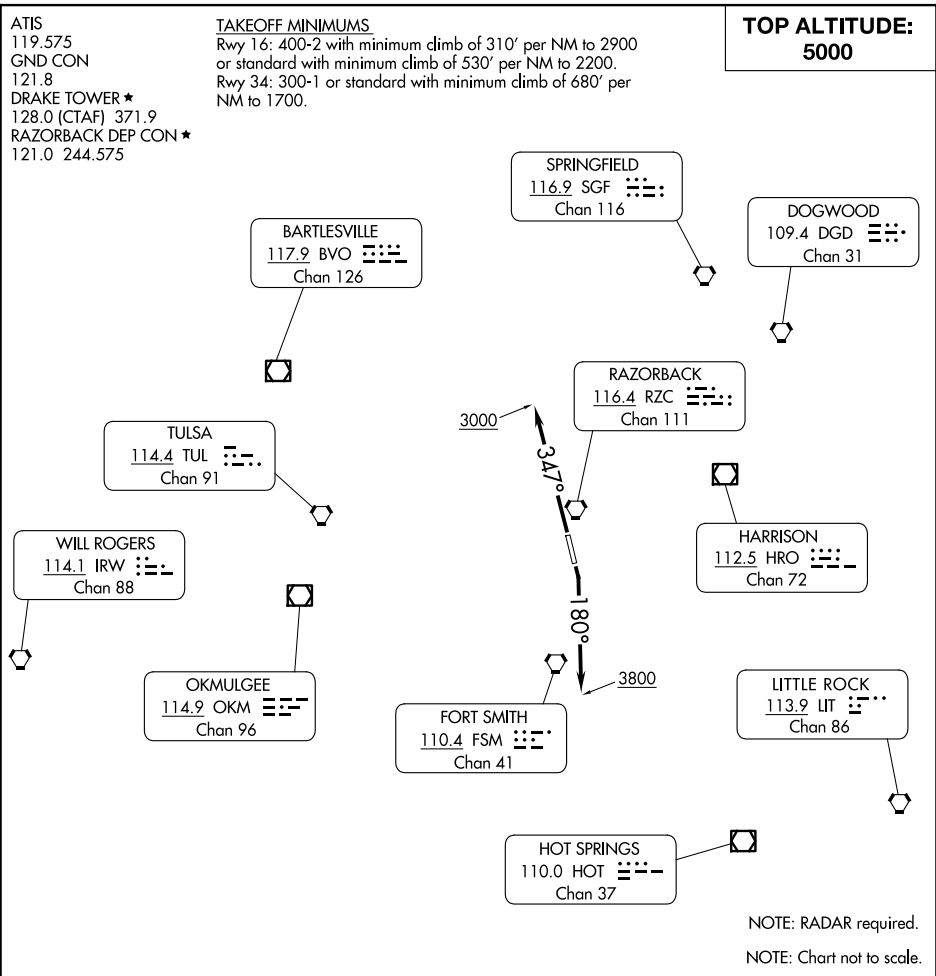


RAZORBACK THREE DEPARTURE



SC-1, 10 JUL 2025 to 07 AUG 2025

SC-1, 10 JUL 2025 to 07 AUG 2025

▼

DEPARTURE ROUTE DESCRIPTION

TAKEOFF RUNWAY 16: Climbing right turn heading 180° to 3800 thence. . .

TAKEOFF RUNWAY 34: Climb heading 347° to 3000 thence. . .

. . . expect RADAR vectors to filed/assigned route. Climb and maintain 5000 or lower assigned altitude. Expect clearance to filed altitude/flight level ten minutes after departure.

LOST COMMUNICATIONS: If communications are not established within 2 minutes after departure, climb and maintain 5000 feet; leaving 3500 feet proceed direct FSM VORTAC, then proceed on course.