

WAAS CH <b>42630</b> <b>W16A</b>	APP CRS <b>167°</b>	Rwy Idg TDZE <b>1252</b> Apt Elev <b>1252</b>
--	------------------------	---

RNAV (GPS) RWY 16

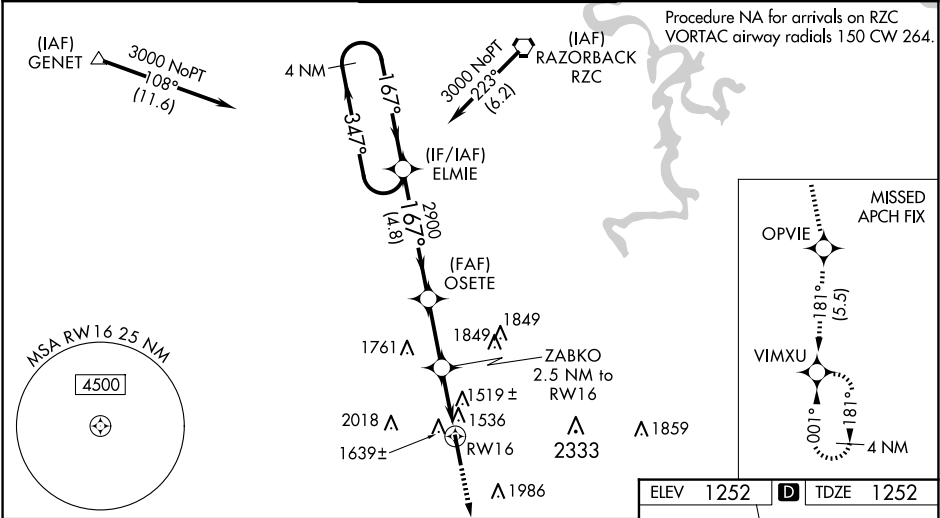
DRAKE FLD (FYV)

Baro-VNAV NA when using Springdale altimeter setting. For uncompensated Baro-VNAV systems, LNAV/VNAV NA below -17°C (2°F) or above 54°C (130°F). When VGSI inop, Straight-in/Circling Rwy 16 procedure NA at night. Circling NA east of Rwy 16-34. DME/DME RNP-0.3 NA. Visibility reduction by helicopters NA. When local altimeter setting not received, use Springdale altimeter setting and increase all DA and MDA 40 feet. Increase LPV all Cats visibility and LNAV Cats C and D visibility ⅓ mile and LNAV/VNAV all Cats visibility ⅓ mile. For inop ODALS, increase LPV all Cats visibility ⅓ mile, LNAV/VNAV all Cats visibility ⅓ mile and LNAV Cats C and D visibility ¼ mile. For inop ODALS, when using Springdale altimeter setting, increase LPV all Cats visibility to 1⅓ miles and LNAV Cats C and D visibility to 2 miles. Inop table does not apply when using Springdale altimeter setting to LNAV/VNAV all Cats and LNAV Cats A and B.

ODALS

MISSED APPROACH:  
Climb to 4000 direct OPVIE and on track 181° to VIMXU and hold.

ATIS <b>119.575</b>	RAZORBACK APP CON★ <b>121.0 244.575</b>	DRAKE TOWER★ <b>128.0 (CTAF) 371.9</b>	GND CON <b>121.8</b>	UNICOM <b>122.95</b>
------------------------	--	---	-------------------------	-------------------------



4 NM Holding Pattern  
ELMIE  
3000  
GP 3.00°  
TCH 50  
347°  
167°  
167°  
2900  
4.8 NM  
2.5 NM  
2.5 NM  
RW16  
\*2080  
ZABKO 2.5 NM to RW16  
OSETE 2900  
OPVIE 4000  
VIMXU tr 181°  
\*LNAV only.

CATEGORY	A	B	C	D
LPV DA		1714-1⅓	462 (500-1⅓)	
LNAV/VNAV DA		1856-1⅞	604 (700-1⅞)	
LNAV MDA	1900-1	648 (700-1)	1900-1¾	648 (700-1¾)
CIRCLING	2000-1	748 (800-1)	2320-3 1068 (1100-3)	2340-3 1088 (1100-3)

ELEV 1252 TDZE 1252  
167°  
91  
TWR 1339  
1337  
6005 X 100  
34

MIRL Rwy 16-34

SC-1, 10 JUL 2025 to 07 AUG 2025

SC-1, 10 JUL 2025 to 07 AUG 2025