

WAAS CH <b>69242</b> <b>W36A</b>	APP CRS <b>356°</b>	Rwy Idg <b>5150</b> TDZE <b>704</b> Apt Elev <b>720</b>
----------------------------------------	------------------------	---------------------------------------------------------------

## RNAV (GPS) RWY 36

OKMULGEE RGNL/PAUL AND BETTY ABBOTT FLD (OKM)

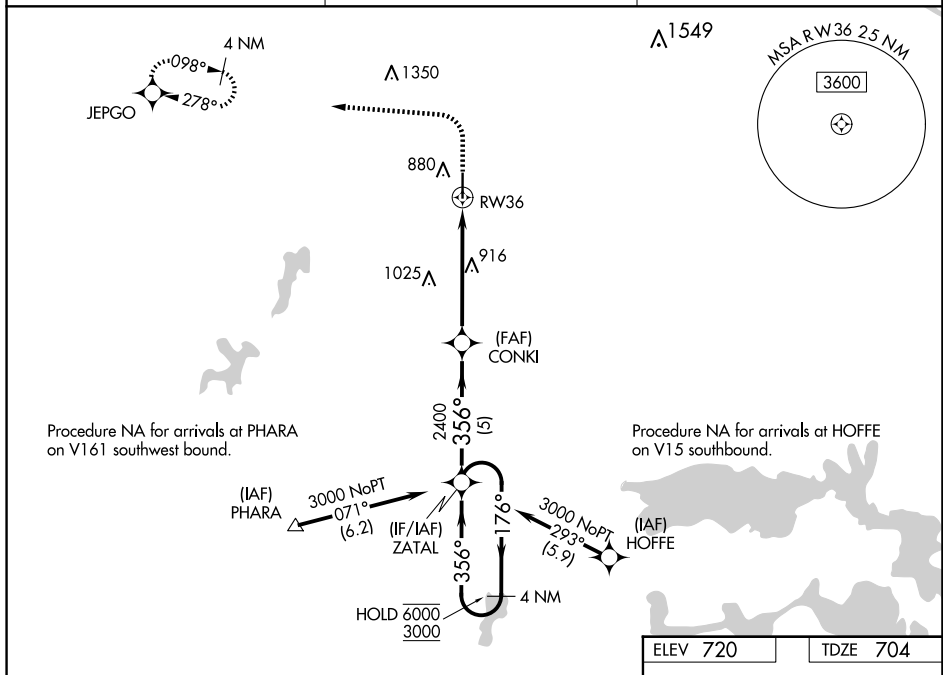
RNP APCH-GPS.



For uncompensated Baro-VNAV systems,  
LNAV/VNAV NA below -24°C or above 45°C.

**MISSED APPROACH:** Climb to 1 200, then climbing left turn to 3000 direct JEPGO and hold.

AWOS-3PT <b>118.225</b>	TULSA APP CON <b>119.85 338.3</b>	UNICOM <b>123.0 (CTAF) 0</b>
----------------------------	--------------------------------------	---------------------------------



4 NM Holding Pattern

ZATAL

6000 ← 176°

3000 → 356°

GP 3.00° TCH 50

CONKI 2400

356°

2400

\*1.4 NM to RW36

RW36

5 NM

3.8 NM

1.4 NM

VGSB and RNAV glidepath not coincident (VGSB Angle 3.00/TCH 40).

1200

3000

JEPGO

\*LNAV only.

