

WAAS CH <b>90429</b> <b>W23A</b>	APP CRS <b>233°</b>	Rwy Ldg TDZE Apt Elev	<b>5801</b> <b>650</b> <b>651</b>
--	------------------------	-----------------------------	---

## RNAV (GPS) RWY 23

MIDDLETOWN RGNL/HOOK FLD (MWO)

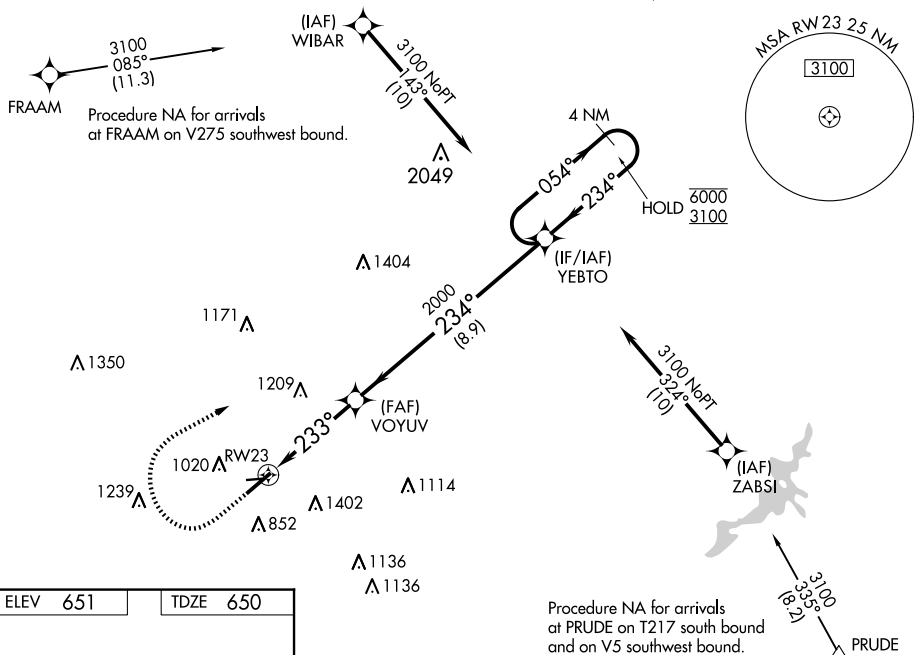
RNP APCH.

**A** Circling NA to Rwy 8 and 26. Circling Rwy 5 NA at night.  
Rwy 23 helicopter visibility reduction below  $\frac{3}{4}$  SM NA.  
For uncompensated Baro-VNAV systems, LNAV/VNAV NA  
below  $-16^{\circ}\text{C}$  or above  $54^{\circ}\text{C}$ .

**MISSED APPROACH:** Climb to 1800 then climbing right turn to 3100 direct YEBTO and hold.

AWOS-3PT  
120.025

COLUMBUS APP CON  
118.85 269.275

UNICOM  
123.0 (CTAF) **L**

ELEV 651

TDZE 650

233°

3026 X 160

6100 X 100

5

23

☆

VGS1 and RNAV glidepath not coincident (VGS1 Angle 3.00/TCH 26).

4 NM Holding Pattern

YEBTO

VOYUV

2000

234°

054°

6000

3100

GP 3.00° TCH 45

2000

233°

1.8 NM

2.3 NM

8.9 NM

\*RNAV only.

\*1.8 NM to RW23

RW23

CATEGORY	A	B	C	D
LPV DA	986-1 $\frac{1}{8}$	336 (400-1 $\frac{1}{8}$ )		
RNAV/DA	1083-1 $\frac{1}{2}$	433 (500-1 $\frac{1}{2}$ )		
RNAV MDA	1140-1	490 (500-1)	1140-1 $\frac{3}{8}$	490 (500-1 $\frac{3}{8}$ )
CIRCLING	1380-1	729 (800-1)	1720-3 1069 (1100-3)	1840-3 1189 (1200-3)