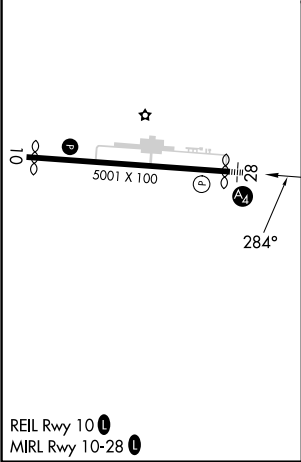
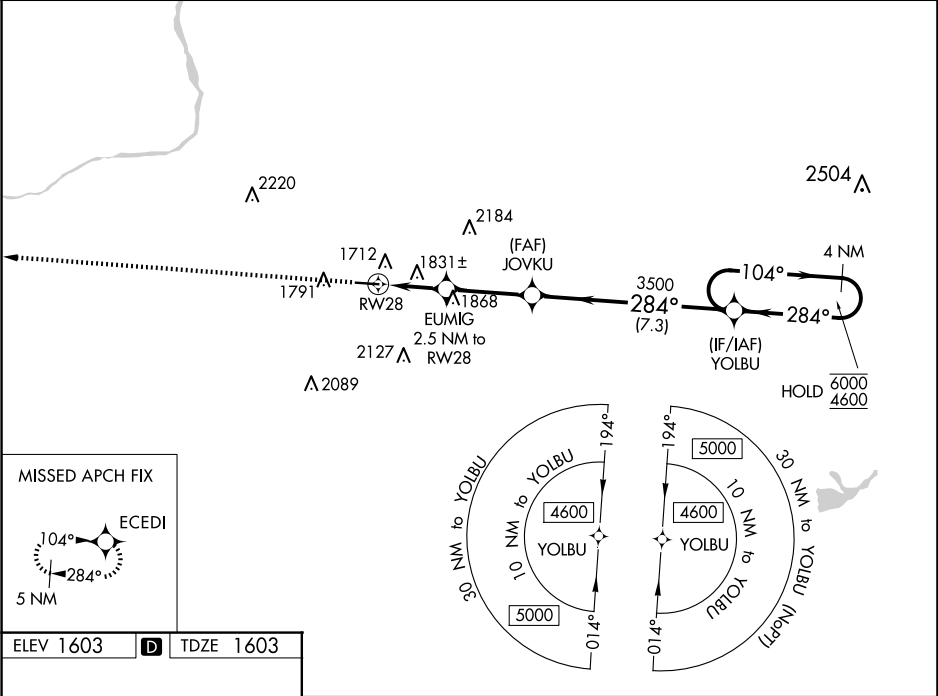


WAAS CH 50140 W28A	APP CRS 284°	Rwy Ldg TDZE Apt Elev	4898 1603 1603
--	------------------------	-----------------------------	---

RNAV (GPS) RWY 28

HAZLETON RGNL (HZL)

RNP APCH.		MALS	MISSED APPROACH: Climb to 4400 direct ECEDI and hold.
▼ Rwy 28 helicopter visibility reduction below ¾ SM NA. Inop table does not apply to LPV all Cats and LNAV Cats A/B. For uncompensated Baro-VNAV systems, LNAV/VNAV NA below -18°C or above 54°C.			
AWOS-3 119.975	WILKES-BARRE APP CON 126.3 256.7	CLNC DEL 121.7	UNICOM 123.0 (CTAF)



4400	ECEDI	EUMIG	JOVKU	YOLBU	4 NM Holding Pattern
		2.5 NM to RW28	3500	104° → 6000 ← 284° 4600	
*LNAV only.		*1.4 NM to RW28	2460*	3500	GP 3.17° TCH 40
1.4		1.1	3.1 NM	7.3 NM	
CATEGORY	A	B	C	D	
LPV DA	1978-1		375 (400-1)		
LNAV/VNAV DA	2143-1¼		540 (600-1¼)		
LNAV MDA	2100-1	497 (500-1)	2100-1½	497 (500-1½)	
CIRCLING	2140-1 537 (600-1)	2400-1 797 (800-1)	2480-2½ 877 (900-2½)	2520-3 917 (1000-3)	