

TACAN Y RWY 5

TACAN NRB Chan 51	APCH CRS 055°	Rwy Idg 8001 TDZE 12 Arpt Elev 15
-----------------------------	-------------------------	--

[USN] MAYPORT NS (ADM DAVID L. MC DONALD FLD) (KNRB)

MISSED APPROACH: Climb to 500. Then climbing right turn to 3000 via NRB TACAN R-081 to BENGEE and hold, continue climb in hold to 3000.

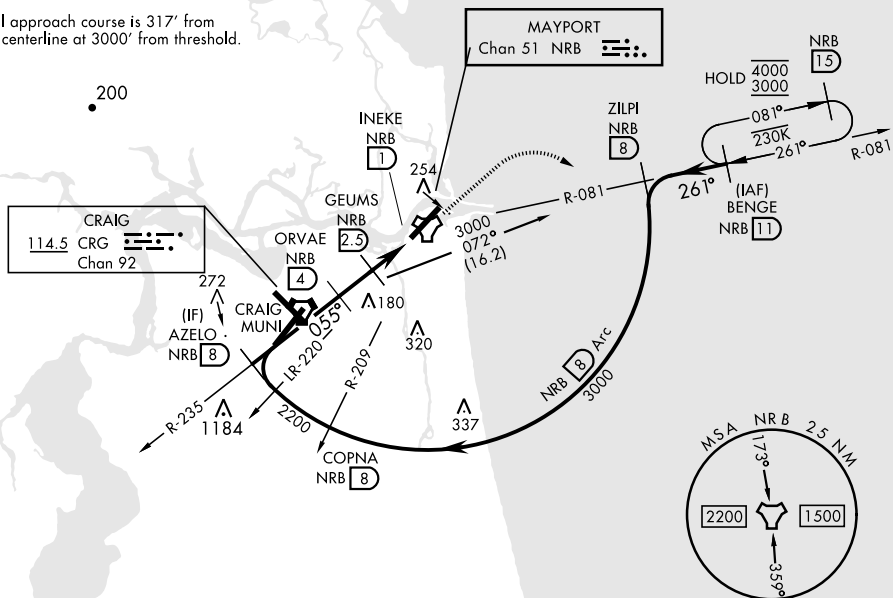
ATIS ★ 236.775	JACKSONVILLE APP CON 124.9 308.4	TOWER ★ 118.75 239.30	GND CON 126.5 233.7	ASR/PAR
-------------------	-------------------------------------	--------------------------	------------------------	---------

CAUTION: Circling not authorized to Rwy 23 at night when VGSI inop on Rwy 23, unless the station has an approved observer watching for marine traffic in the St. John's River channel.

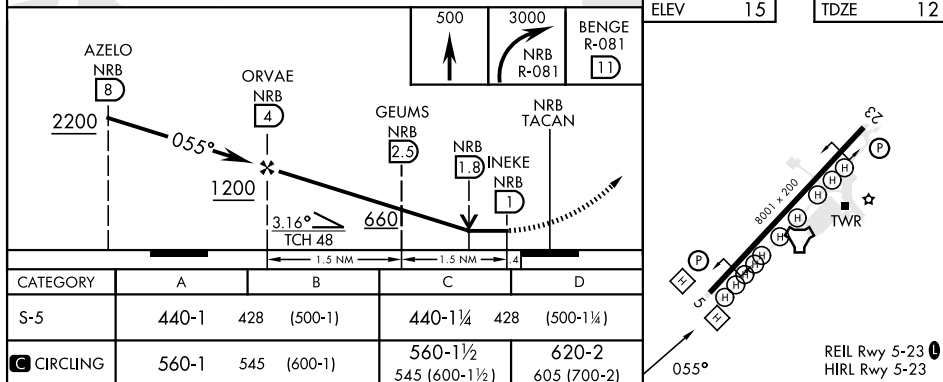
CAUTION: Intmed seg len 4 NM.

CRG feeder requires turn in hold.

Final approach course is 317' from
rwy centerline at 3000' from threshold.



EMERG SAFE ALT 100 NM 2800



MAYPORT, FLORIDA

30°23'N-81° 25'W MAYPORT NS (ADM DAVID L. MC DONALD FLD) (KNRB)

Amdt 5 05SEP24

TACAN Y RWY 5

SE-3, 10 JUL 2025 to 07 AUG 2025

SE-3, 10 JUL 2025 to 07 AUG 2025