

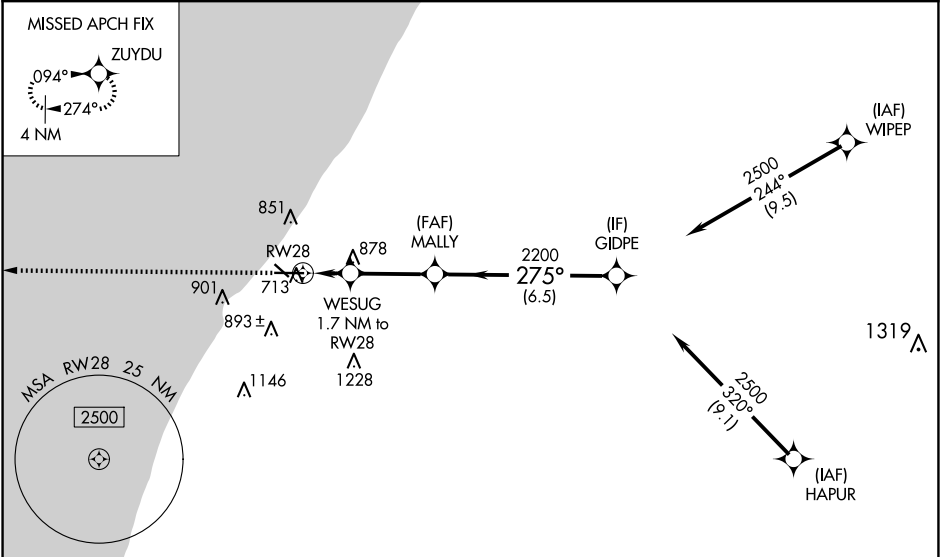
WAAS CH <b>45822</b> <b>W28A</b>	APP CRS <b>275°</b>	Rwy Idg TDZE Apt Elev	<b>6006</b> <b>649</b> <b>649</b>
--	------------------------	-----------------------------	---

RNAV (GPS) RWY 28

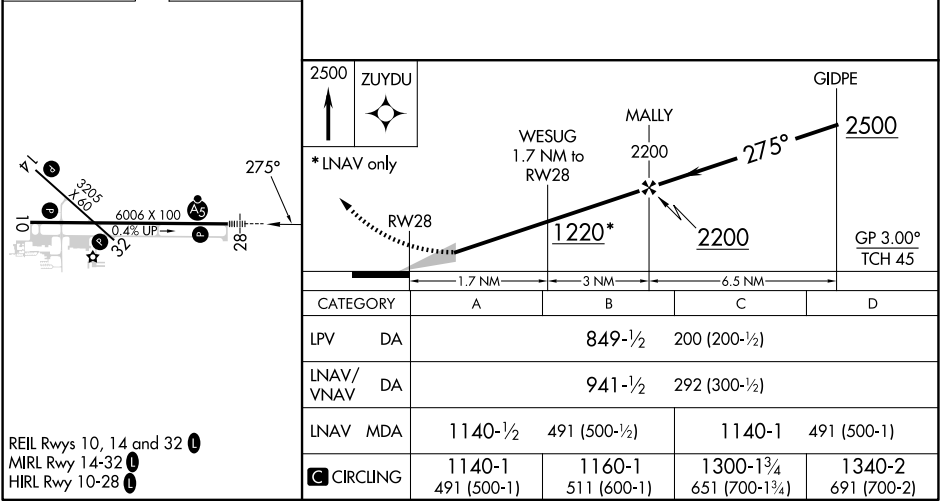
SOUTHWEST MICHIGAN RGNL (BEH)

RNP APCH.		<div>MALSR</div> <div></div>	<div>MISSED APPROACH: Climb to 2500 direct ZUYDU and hold.</div>
<div><div><div>T</div></div><div>For uncompensated Baro-VNAV systems, LNAV/VNAV NA below -19°C (-2°F) or above 39°C (102°F). Circling Rwy 14, 32 NA at night.</div></div>			

ASOS <b>121.55</b>	SOUTH BEND APP CON* <b>118.55 257.8</b>	SOUTH BEND CLNC DEL <b>119.7</b>	UNICOM <b>123.0 (CTAF) 0</b>
-----------------------	--	-------------------------------------	---------------------------------



ELEV 649	TDZE 649
----------	----------



EC-1, 10 JUL 2025 to 07 AUG 2025

EC-1, 10 JUL 2025 to 07 AUG 2025