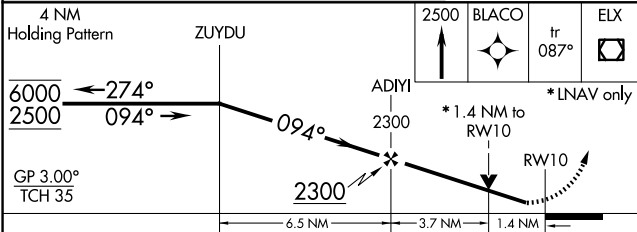
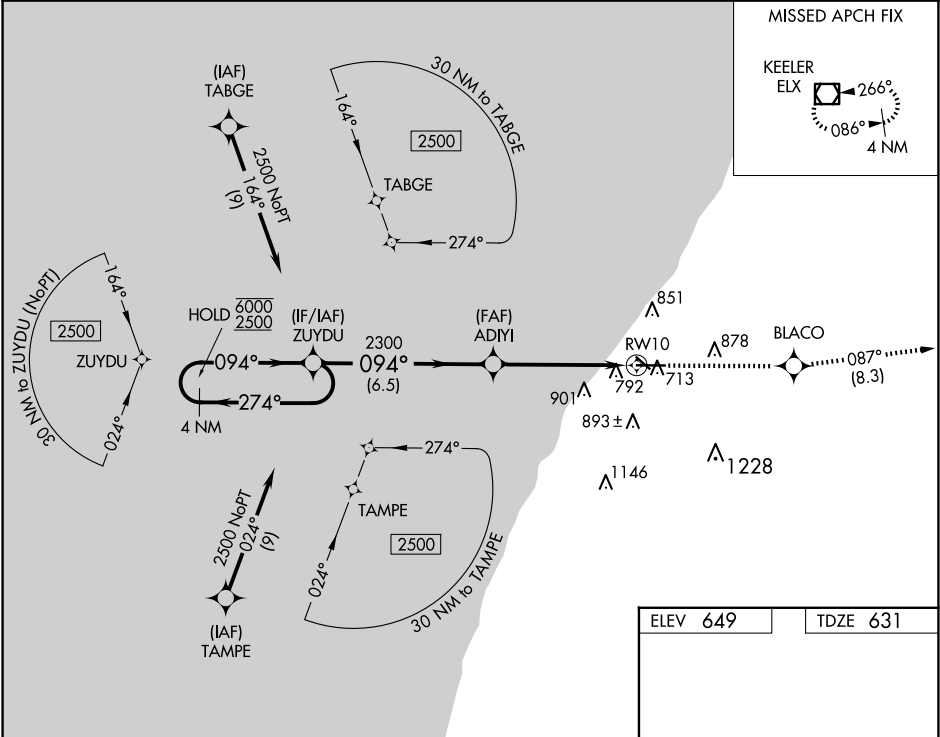


WAAS CH 86912 W10A	APP CRS 094°	Rwy Idg TDZE Apt Elev	6006 631 649
--	------------------------	-----------------------------	---

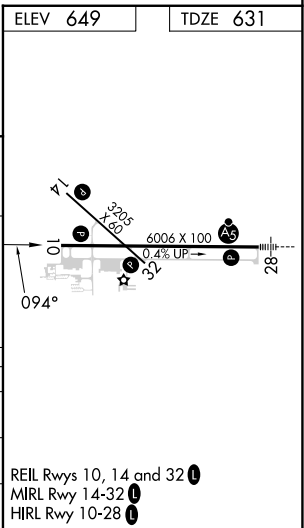
RNAV (GPS) RWY 10
SOUTHWEST MICHIGAN RGNL (BEH)

RNP APCH.	MISSED APPROACH: Climb to 2500 direct BLACO and on track 087° to ELX VOR/DME and hold.
<div><div></div><div>Rwy 10 helicopter visibility reduction below 3/4 SM NA. For uncompensated Baro-VNAV systems, LNAV/VNAV NA below -20°C or above 54°C.</div></div>	

ASOS 121.55	SOUTH BEND APP CON* 118.55 257.8	SOUTH BEND CLNC DEL 119.7	UNICOM 123.0 (CTAF)
-----------------------	--	-------------------------------------	-------------------------------



CATEGORY	A	B	C	D
LPV DA	881-7/8	250 (300-7/8)		
LNAV/VNAV DA	1068-1 1/2	437 (500-1 1/2)		
LNAV MDA	1100-1	469 (500-1)	1100-1 3/8	469 (500-1 3/8)



EC-1, 10 JUL 2025 to 07 AUG 2025

EC-1, 10 JUL 2025 to 07 AUG 2025