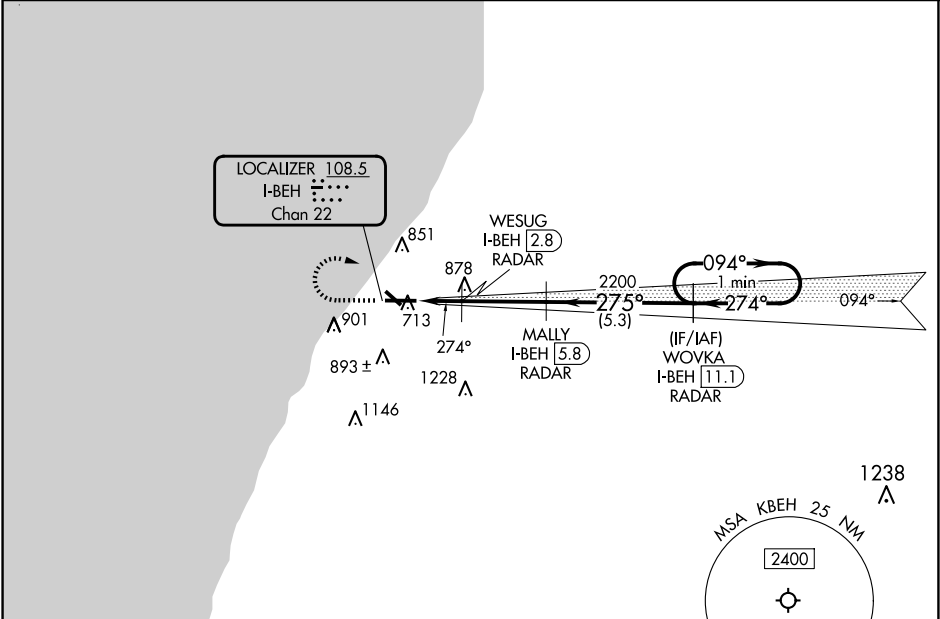


LOC I-BEH <b>108.5</b> Chan <b>22</b>	APP CRS <b>274°</b>	Rwy Idg TDZE Apt Elev <b>6006</b> <b>649</b> <b>649</b>
---	------------------------	--

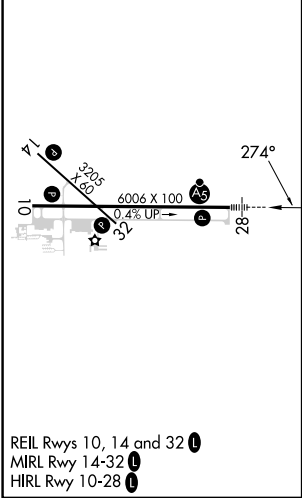
ILS or LOC RWY 28  
SOUTHWEST MICHIGAN RGNL (BEH)

RNAV 1-GPS required.	MALSR	MISSED APPROACH: Climb to 1300 then climbing right turn to 3000 direct WOVKA and hold.
DME Required for LOC only.		
Circling Rwy 14 and 32 NA at night.		
For inop ALS, increase S-LOC 28 Cat C/D visibility to 1 1/8 SM.		

ASOS <b>121.55</b>	SOUTH BEND APP CON * <b>118.55 257.8</b>	SOUTH BEND CLNC DEL <b>119.7</b>	UNICOM <b>123.0 (CTAF) 0</b>
-----------------------	---	-------------------------------------	---------------------------------



ELEV <b>649</b>	TDZE <b>649</b>
-----------------	-----------------



1300	3000	WOVKA I-BEH 11.1 RADAR	WOVKA I-BEH 11.1 RADAR	One Minute Holding Pattern
*LOC only.		MALLY I-BEH 5.8 RADAR		
		WESUG I-BEH 2.8 RADAR		
		I-BEH 1.2	I-BEH 2.3	
		1.2 NM	0.5 NM	
		3 NM	5.3 NM	
CATEGORY	A	B	C	D
S-ILS 28	849-1/2	200 (200-1/2)		
S-LOC 28	1060-1/2	411 (500-1/2)	1060-3/4	411 (500-3/4)
CIRCLING	1140-1 491 (500-1)	1160-1 511 (600-1)	1300-1 3/4 651 (700-1 3/4)	1340-2 691 (700-2)

EC-1, 10 JUL 2025 to 07 AUG 2025

EC-1, 10 JUL 2025 to 07 AUG 2025