

WAAS

CH **65799**

**W06A**

APP CRS

**057°**

Rwy Ldg

**5000**

TDZE

**1212**

Apt Elev

**1212**

RNAV (GPS) RWY 6

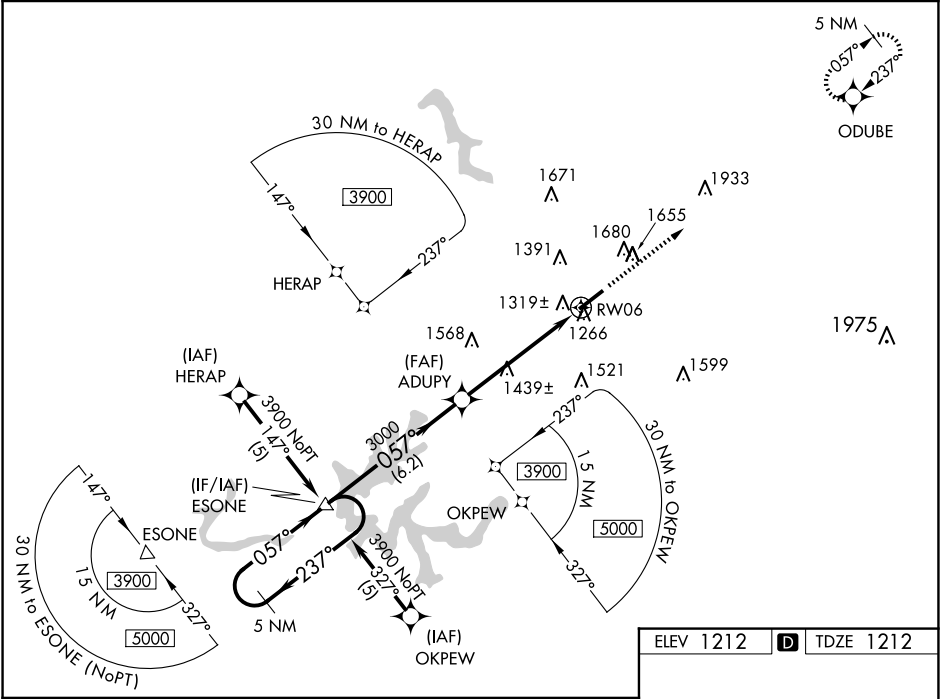
LONDON/CORBIN/MAGEE (LOZ)

RNP APCH.

▼ Visibility reduction by helicopters NA. When local altimeter setting not received, use Somerset altimeter setting: increase LPV DA to 1566 feet and visibility all Cats ¼ SM; increase LNAV/VNAV DA to 1702 feet and visibility all Cats ½ SM; increase all MDAs 100 feet and LNAV Cat C visibility ¼ SM, Cat D visibility ½ SM, and Circling Cat C/D visibility ¼ SM. For uncompensated Baro-VNAV systems, LNAV/VNAV NA below -17° C or above 46° C. Baro-VNAV and VDP NA when using Somerset altimeter setting.

MISSED APPROACH:  
Climb to 3900 direct ODUBE and hold.

ASOS <b>119.075</b>	INDIANAPOLIS CENTER <b>124.625 371.925</b>	UNICOM <b>123.0 (CTAF) 0</b>
------------------------	---	---------------------------------



5 NM Holding Pattern		ESONE	ADUPY	RW06
3900		057°	057°	057°
GP 3.00° TCH 49				
6.2 NM		5.4 NM		
CATEGORY	A	B	C	D
LPV DA	1466-1		254 (300-1)	
LNAV/VNAV DA	1602-1¼		390 (400-1¼)	
LNAV MDA	1720-1	508 (600-1)	1720-1½	508 (600-1½)
CIRCLING	1780-1 568 (600-1)	2040-1¼ 828 (900-1¼)	2040-2½ 828 (900-2½)	2040-2¾ 828 (900-2¾)

ELEV 1212

TDZE 1212

3900

ODUBE

057°

057°

MIRL Rwy 6-24

REIL Rwy 6 and 24