

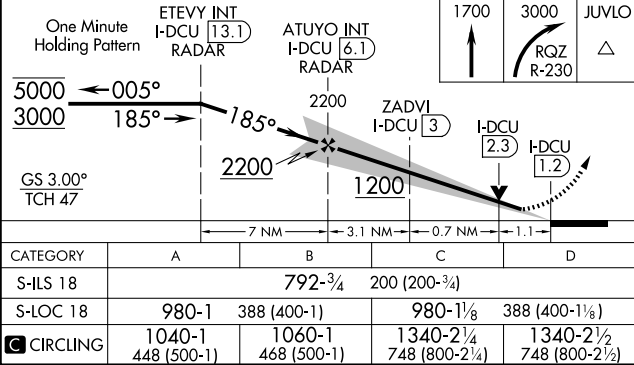
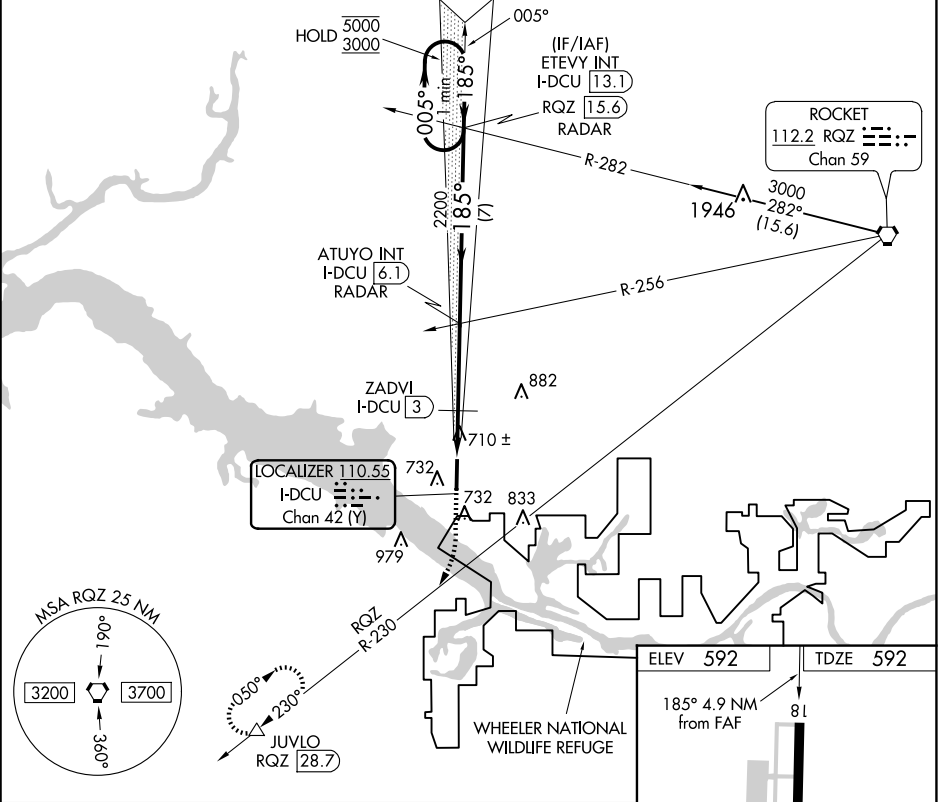
LOC/DME I-DCU <b>110.55</b> Chan <b>42</b> (Y)	APP CRS <b>185°</b>	Rwy Idg <b>6107</b> TDZE <b>592</b> Apt Elev <b>592</b>
--	------------------------	---

ILS or LOC RWY 18

PRYOR FLD RGNL (DCU)

DME required.	MISSED APPROACH: Climb to 1700, then climbing right turn to 3000 on RQZ VORTAC R-230 to JUVLO/RQZ 28.7 DME and hold.
---------------	--

ASOS <b>118.375</b>	HUNTSVILLE APP CON★ <b>118.05 239.0</b>	UNICOM <b>123.075 (CTAF) 0</b>
------------------------	--	-----------------------------------



ELEV 592	TDZE 592			
185° 4.9 NM from FAF				
81				
636				
6107 X 100				
36				
HIRL Rwy 18-36				
REIL Rws 18 and 36				
FAF to MAP 4.9 NM				
Knots	60	90	120	150 180
Min:Sec	4:54	3:16	2:27	1:58 1:38

SE-4, 10 JUL 2025 to 07 AUG 2025

SE-4, 10 JUL 2025 to 07 AUG 2025