

WAAS CH 82746	APP CRS 067°	Rwy Idg TDZE Apt Elev	5031 690 690
-------------------------	------------------------	-----------------------------	---

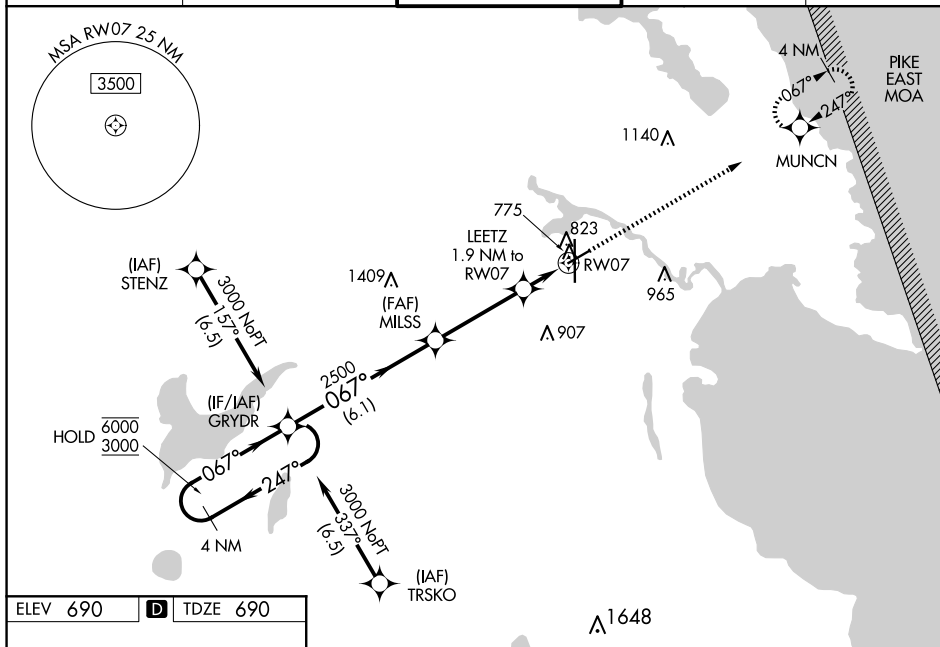
RNAV (GPS) RWY 7

RNP APCH - GPS.

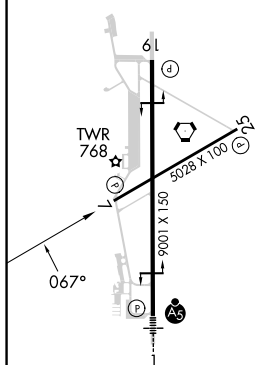
T Baro-VNAV and VDP NA when using PZQ altimeter setting. Rwy 7 helicopter visibility reduction below $\frac{3}{4}$ SM NA. For uncompensated Baro-VNAV systems, LNAV/VNAV NA below -18°C or above 54°C . When local altimeter setting not received, use PZQ altimeter setting and increase LPV DA to 1007 feet, increase LNAV/VNAV DA to 1039 feet; increase all MDAs 60 feet and LNAV visibility Cat C/D $\frac{1}{4}$ SM.

MISSED APPROACH:
Climb to 3000 direct
MUNCN and hold,
continue climb-in-
hold to 3000.

ATIS ★ 120.675 327.05	ALPENA APP CON ★ 128.425 379.3	ALPENA TOWER ★ 121.35 (CTAF) 0 318.1	GND CON 121.9 275.8	UNICOM 122.95
--------------------------	-----------------------------------	---	------------------------	------------------



ELEV 690	D	TDZE 690
----------	----------	----------



HIRL Rwy 1-19 **L**
MIRL Rwy 7-25 **L**
REIL Rwy 7, 19 and 25 **L**

VGSI and RNAV glidepath not coincident
(VGSI Angle 3.00°/TCH 49).

CATEGORY	A	B	C	D
LPV DA		952-1	262 (300-1)	
RNAV/ VNAV DA		984-1	294 (300-1)	
RNAV MDA	1080-1	390 (400-1)	1080-1½	390 (400-1½)
CIRCLING	1140-1	450 (500-1)	1220-1½ 530 (600-1½)	1300-2 610 (700-2)