

WAAS CH 53717 W19A	APP CRS 187°	Rwy Idg TDZE 683 Apt Elev 690
--	------------------------	---

RNAV (GPS) RWY 19

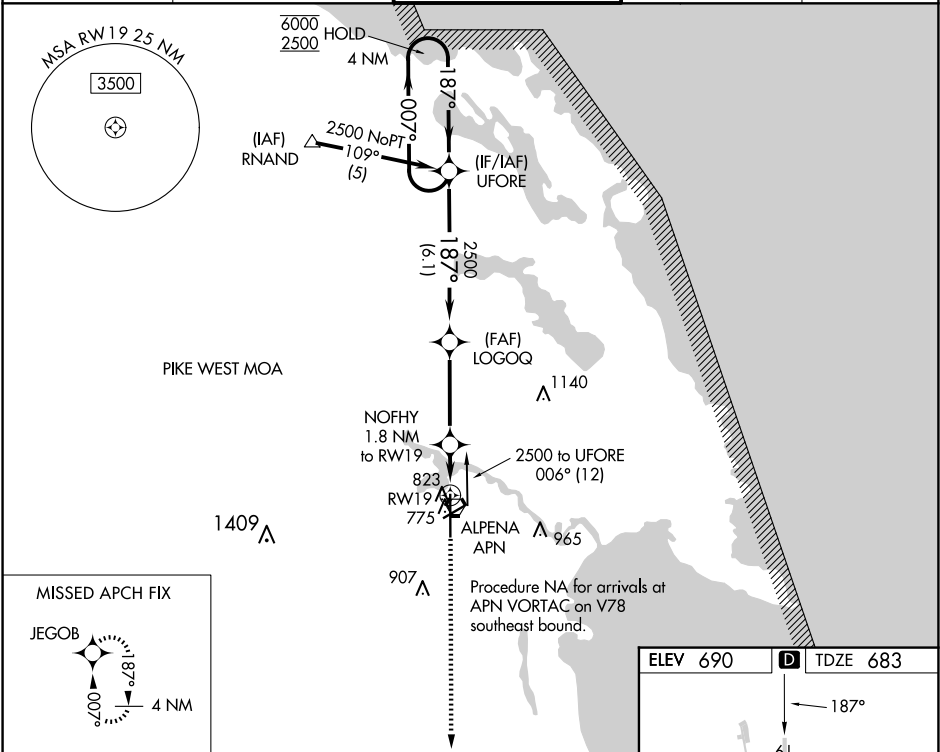
ALPENA COUNTY RGNL (APN)

RNP APCH.

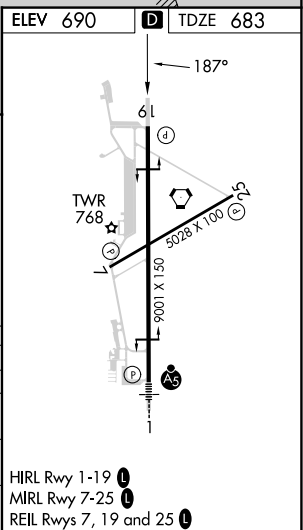
For uncompensated Baro-VNAV systems, LNAV/VNAV NA below -16°C or above 54°C.

MISSED APPROACH: Climb to 2800 direct JEGOB and hold.

ATIS 120.675 327.05	ALPENA APP CON ★ 128.425 379.3	ALPENA TOWER ★ 121.35 (CTAF) 0 318.1	GND CON 121.9 275.8	UNICOM 122.95
-------------------------------	--	--	-------------------------------	-------------------------



2800	JEGOB	NOFHY 1.8 NM to RW19	LOGOQ 2500	UFORE	4 NM Holding Pattern
*LNAV only		*1.1 NM to RW19			
GP 3.00° TCH 50			VGSi and RNAV glidepath not coincident (VGSi Angle 3.00/TCH 39).		
CATEGORY	A	B	C	D	
LPV DA	933-3/4 250 (300-3/4)				
LNAV/VNAV DA	1020-1 1/4 337 (400-1 1/4)				
LNAV MDA	1080-1 397 (400-1)		1080-1 1/8 397 (400-1 1/8)		
CIRCLING	1140-1 450 (500-1)		1220-1 1/2 530 (600-1 1/2) 1280-2 590 (600-2)		



EC-1, 10 JUL 2025 to 07 AUG 2025

EC-1, 10 JUL 2025 to 07 AUG 2025