

ALPENA, MICHIGAN

HI-VOR or TACAN RWY 1

VORTAC APN 116.5 Chgn 112	APCH CRS 014°	Rwy Idg 9001 TDZE 685 Arpt Elev 690
---	-------------------------	--

[USAF]

ALPENA COUNTY RGNL (KAPN)

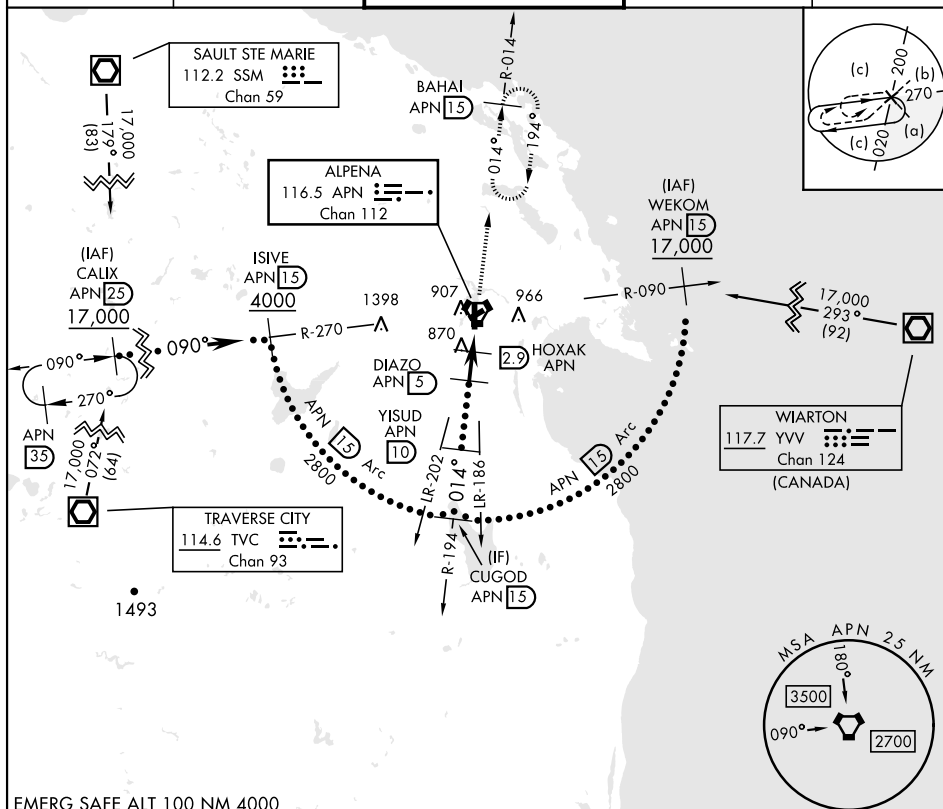
DME required

T *When ALS inop, increase vis to 1 3/8 miles.

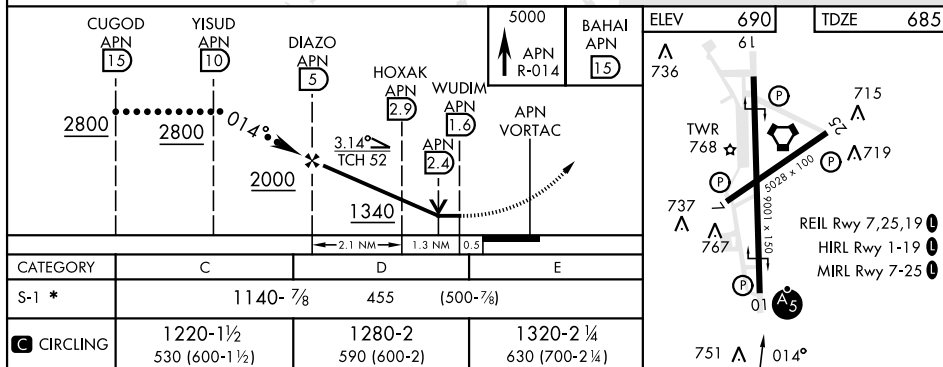


MISSED APPROACH: Climb to 5000 on APN R-014 to BAHAI 15 DME and hold, continue climb in hold to 5000.

ATIS ★ 120.675 327.05	ALPENA APP CON 128.425 379.3	ALPENA TOWER ★ 121.35 (CTAF) 0 318.1	GND CON 121.9 275.8	UNICOM 122.95
--------------------------	---------------------------------	---	------------------------	------------------



EMERG SAFE ALT 100 NM 4000



ALPENA, MICHIGAN

45°05'N - 83°34'W

ALPENA COUNTY RGNL (KAPN)

Amdt 1C 13AUG20

HI-VOR or TACAN RWY 1