

WAAS CH 57933 W17A	APP CRS 174°	Rwy Idg TDZE Apt Elev	6502 867 874
--	------------------------	-----------------------------	---

RNAV (GPS) RWY 17

KALAMAZOO/BATTLE CREEK INTL (AZO)

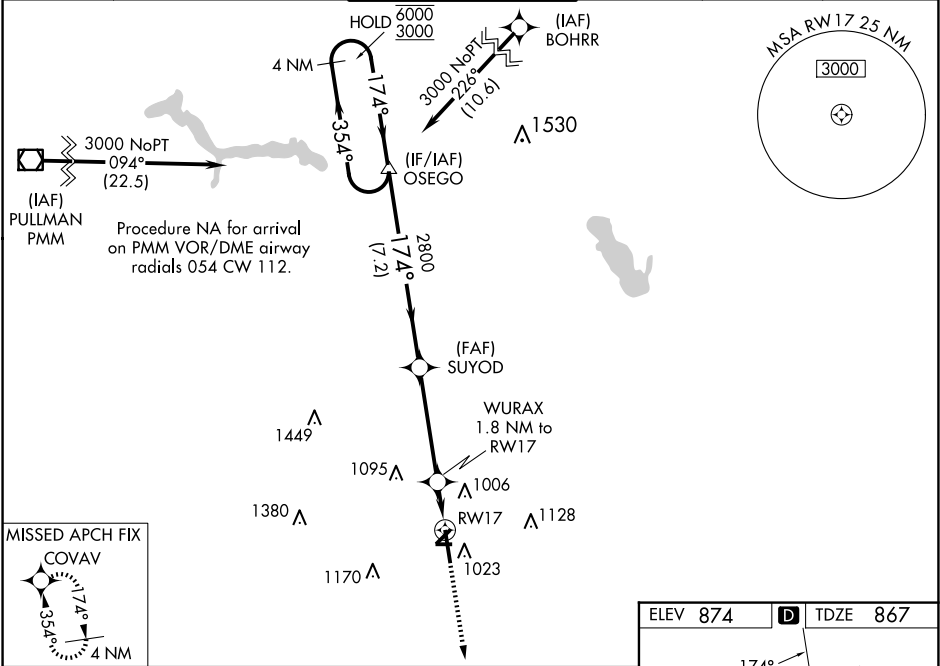
RNP APCH - GPS

⚠

Rwy 17 helicopter visibility reduction below ¾ SM NA. Baro-VNAV NA when using Battle Creek altimeter setting. For uncompensated Baro-VNAV systems, LNAV/VNAV NA below -20°C or above 54°C. Circling Rwy 5, 9, 23, 27 NA at night. When local altimeter setting not received, use Battle Creek altimeter setting: increase LPV DA to 1200 feet, LNAV/VNAV DA to 1229 feet; increase all MDAs 60 feet.

MISSED APPROACH:
Climb to 2800 direct COVAV and hold.

ATIS 127.25	GREAT LAKES APP CON ★ 121.2 239.25	KALAMAZOO TOWER ★ 118.3 (CTAF) 0 257.875	GND CON 121.9	CLNC DEL 121.75	UNICOM 122.95
-----------------------	--	---	-------------------------	---------------------------	-------------------------



4 NM Holding Pattern		OSEGO		2800 COVAV	
6000 3000		← 354° 174° →		174°	
GP 3.00° TCH 45		2800		1460	
		7.2 NM		4.2 NM	
CATEGORY	A	B	C	D	
LPV DA	1156-1		289 (300-1)		
LNAV/VNAV DA	1185-1		318 (400-1)		
LNAV MDA	1320-1	453 (500-1)	1320-1⅓	453 (500-1⅓)	
CIRCLING	1380-1	506 (600-1)	1480-1¾ 606 (700-1¾)	1480-2 606 (700-2)	

