
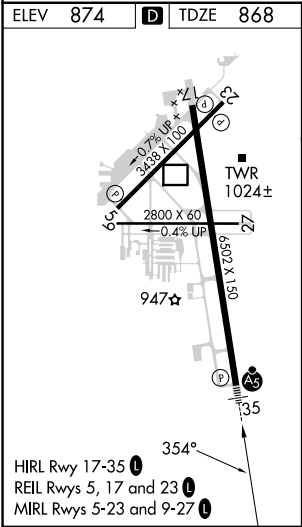
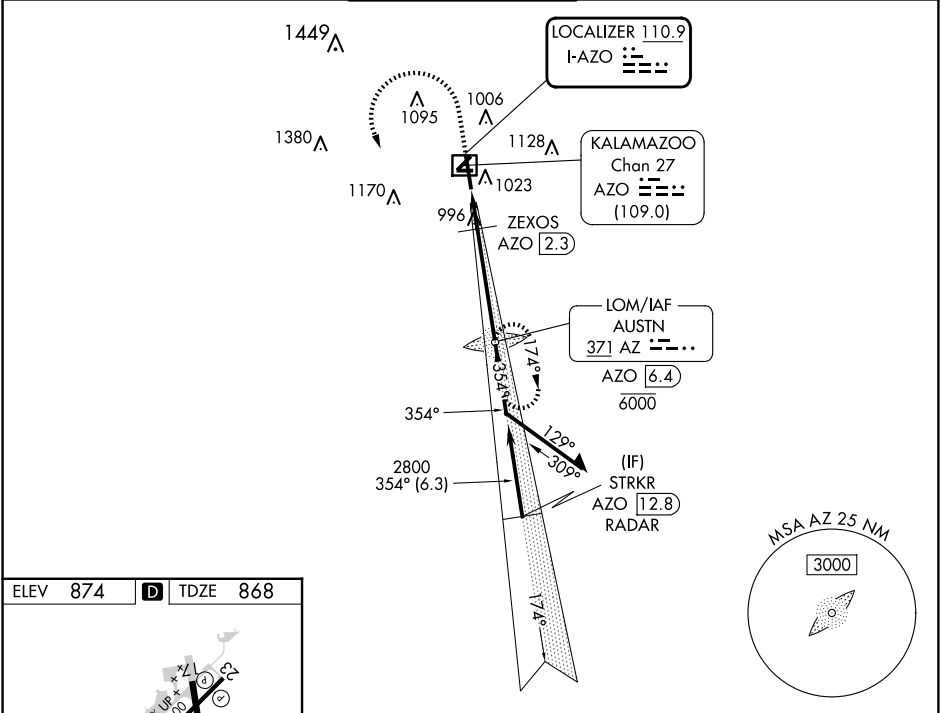


LOC I-AZO <b>110.9</b>	APP CRS <b>354°</b>	Rwy Idg TDZE Apt Elev	<b>6502</b> <b>868</b> <b>874</b>
---------------------------	------------------------	-----------------------------	---

ILS or LOC RWY 35  
KALAMAZOO/BATTLE CREEK INTL (AZO)

ADF required. DME required for LOC only. RADAR required for procedure entry.		<div>MALSR</div> <div></div>	MISSED APPROACH: Climb to 2000 then climbing left turn to 2800 direct AUSTN LOM/AZO 6.4 DME and hold.
<div><div><div><div><div></div><div></div></div><div><div></div><div></div></div></div><div><div></div><div></div></div></div><div>NA</div></div>	DME from AZO DME. DME use requires simultaneous reception of I-AZO and AZO DME. Circling Rwy 5, 9, 23, 27 NA at night. When local altimeter setting not received, use Battle Creek altimeter setting: increase S-ILS 35 DA to 1112 feet; increase all MDAs 60 feet and visibility S-LOC 35 Cat C/D to RVR 4500. * RVR 1800 authorized with use of FD or AP or HUD to DA (NA when using Battle Creek altimeter setting).		

ATIS <b>127.25</b>	GREAT LAKES APP CON ★ <b>121.2 239.25</b>	KALAMAZOO TOWER ★ <b>118.3 (CTAF) 0 257.875</b>	GND CON <b>121.9</b>	CLNC DEL <b>121.75</b>	UNICOM <b>122.95</b>
-----------------------	--	--	-------------------------	---------------------------	-------------------------



2000 ↑		2800 ↘		AUSTN LOM AZO [6.4]		6000 2710		174°		2800		Remain within 10 NM	
AZO [0.8]		ZEXOS AZO [2.3]		1400		2800		354°		GS 3.00°		TCH 53	
1.5 NM		4.1 NM											
CATEGORY		A		B		C		D					
S-ILS 35*				1068/24		200 (200-½)							
S-LOC 35		1260/24		392 (400-½)		1260/35		392 (400-¾)					
CIRCLING		1340-1		466 (500-1)		1480-1¾ 606 (700-1¾)		1480-2 606 (700-2)					

EC-1, 10 JUL 2025 to 07 AUG 2025

EC-1, 10 JUL 2025 to 07 AUG 2025