

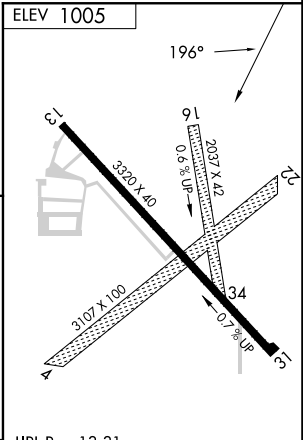
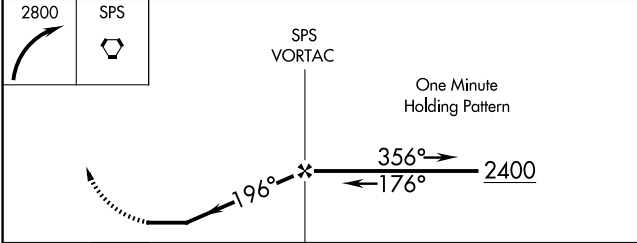
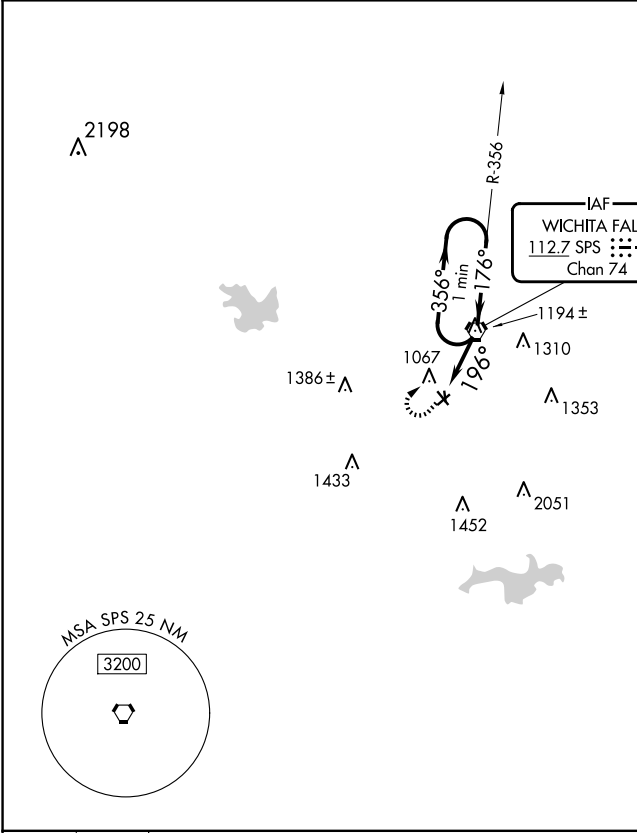
VORTAC SPS 112.7 Chan 74	APP CRS 196°	Rwy Idg TDZE Apt Elev N/A N/A 1005
--	------------------------	--

VOR-B

WICHITA FALLS/ WICHITA VALLEY (F14)

<p>▼ Use Sheppard AFB/Wichita Falls Muni altimeter setting; when not received, use Frederick, OK altimeter setting and increase all MDA 100 feet. Increase Circling Cat C visibility ¼ mile. Circling NA to Rwy 4/22 and 16/34. Procedure NA at night.</p> <p>▲ NA</p>	<p>MISSED APPROACH: Climbing right turn to 2800 direct SPS VORTAC and hold.</p>
--	---

SHEPPARD APP CON ★ 118.2 292.3	UNICOM 122.8 (CTAF)
--	-------------------------------



CATEGORY	A	B	C	D	FAF to MAP 2.5 NM					
CIRCLING	1520-1 515 (600-1)	1680-1 675 (700-1)	1700-2 695 (700-2)	NA	Knots	60	90	120	150	180
					Min:Sec	2:30	1:40	1:15	1:00	0:50

SC-2, 10 JUL 2025 to 07 AUG 2025

SC-2, 10 JUL 2025 to 07 AUG 2025