

WAAS CH 42632 W35A	APP CRS 352°	Rwy Idg TDZE Apt Elev	4809 3641 3649
--	------------------------	-----------------------------	---

RNAV (GPS) RWY 35

TRADEWIND (TDW)

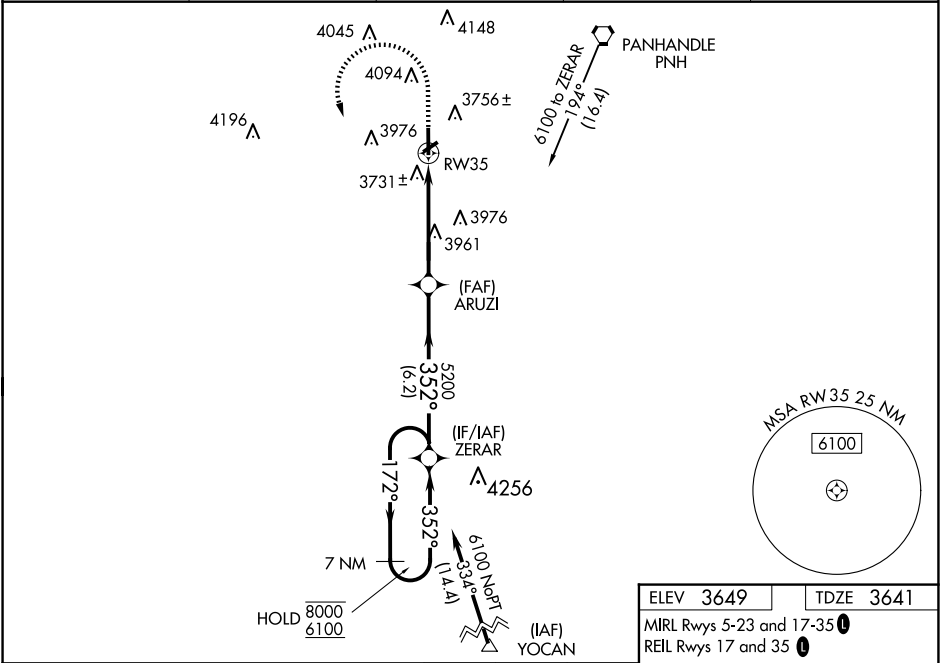
RNP APCH-GPS.

NA

Procedure NA at night. Rwy 35 helicopter visibility reduction below 1 SM NA. Baro-VNAV NA. Use Rick Husband Amarillo Intl altimeter setting; when not received, use Hereford altimeter setting; increase LPV DA to 3983 feet, LNAV/VNAV DA to 4108 feet, and all MDAs 80 feet, and increase LNAV/VNAV all Cats and Circling Cat B visibility ¼ SM.

MISSED APPROACH: Climb to 4100 then climbing left turn to 6100 direct ZERAR and hold, continue climb-in-hold to 6100.

AWOS-AV 118.475	AMA ASOS 118.85 350.3	AMARILLO APP CON★ 119.5 307.0	CLNC DEL 125.4	UNICOM 122.8 (CTAF) 0
---------------------------	---------------------------------	---	--------------------------	---------------------------------



ELEV 3649	TDZE 3641
MIRL Rwy 5-23 and 17-35 0	
REIL Rwy 17 and 35 0	

CATEGORY		A	B	C	D
LPV	DA	3913-1	272 (300-1)		NA
LNAV/VNAV	DA	4038-1½	397 (400-1½)		NA
LNAV	MDA	4300-1	659 (700-1)		NA
CIRCLING		4300-1 651 (700-1)	4420-1 771 (800-1)		NA

