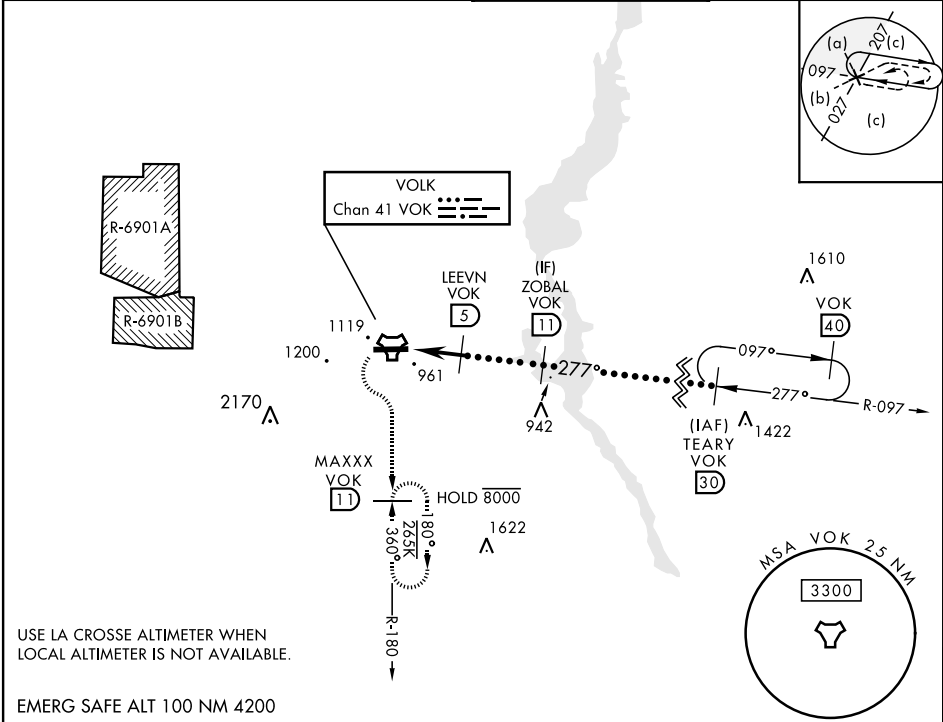


HI-TACAN RWY 27

TACAN VOK Chan 41	APCH CRS 277°	Rwy Idg THRE 904 Arpt Elev 912	AL-714 [USAF]	VOLK FLD (KVOK)
* When ALS inop, increase vis to 1½ miles. ** Circling not authorized South of Rwy 9-27. *** When ALS inop, increase vis to 1¾ miles.			ALS-1	MISSED APPROACH: Climbing left turn to 3000 intercept VOK TACAN R-180 to MAXXX and hold.
ATIS 134.35 257.85	APP CON 135.25 244.875	TOWER ★ 127.5 (CTAF) 239.25	GND CON 121.9 275.8	



3000

VOK

R-180

MAXXX

VOK

11

TEARY

30

TACAN

EEDEE

1.5

LEEVN

5

ZOBAL

11

2700

277°

FL180

2.94°

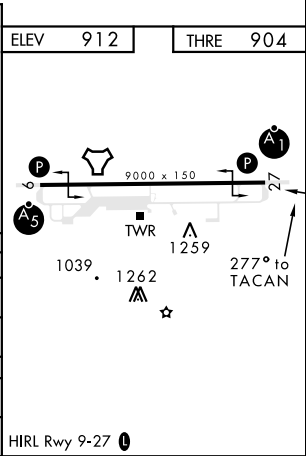
TCH 53

0.5

3.5 NM

2200

CATEGORY	C	D	E
S-27 *	1360/45 456 (500-7%)		
CIRCLING **	1500-1½ 588 (600-1½)	1500-2 588 (600-2)	1580-2¼ 668 (700-2¼)
LA CROSSE ALTIMETER SETTING MINIMUMS			
S-27 ***	1500- 1¼	596 (600-1¼)	
CIRCLING **	1640-2 728 (800-2)	1640-2¼ 728 (800-2¼)	1720-2¾ 808 (900-2¾)



HI-TACAN RWY 27