

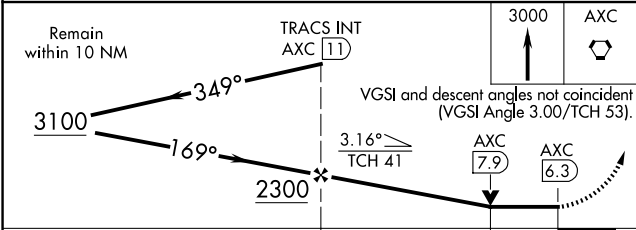
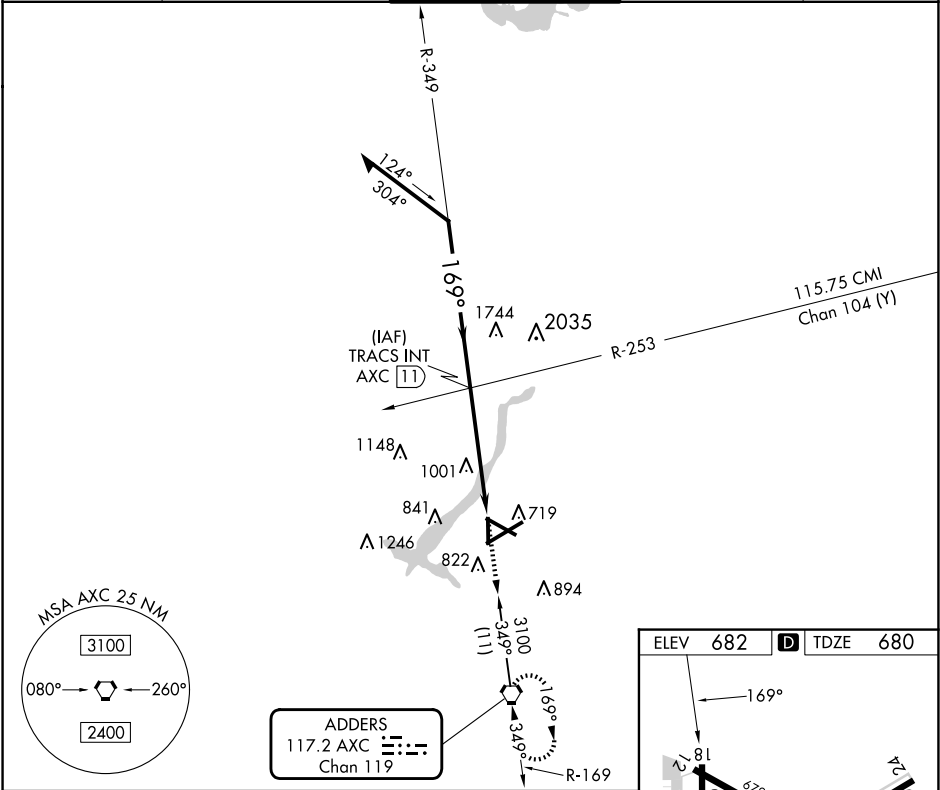
| | | | |
|------------|---------|----------|------|
| VORTAC AXC | APP CRS | Rwy Idg | 5298 |
| 117.2 | 169° | TDZE | 680 |
| Chan 119 | | Apt Elev | 682 |

VOR RWY 18
DECATUR (DEC)

When local altimeter setting not received, use Logan County altimeter setting and increase all MDA 80 feet; increase S-18 Cat C/D and Circling Cat C/D visibility ¼ SM. Rwy 18 helicopter visibility reduction below ¼ SM NA.

MISSED APPROACH: Climb to 3000 direct AXC VORTAC and hold, continue climb-in-hold to 3000.

| | | | | |
|----------------|---------------------------------------|---|---------------------------|------------------|
| ATIS 126.35 | CHAMPAIGN APP CON ★ 132.85 290.225 | DECATUR TOWER ★ 118.9 (CTAF) 291.775 | GND CON 121.75 291.775 | UNICOM 122.95 |
|----------------|---------------------------------------|---|---------------------------|------------------|



| | |
|----------------------------|--------------------------|
| ELEV 682 | TDZE 680 |
| | |
| HIRL Rwy 6-24 0 | |
| MIRL Rws 12-30 and 18-36 0 | |
| FAF to MAP 4.7 NM | |
| Knots | 60 90 120 150 180 |
| Min:Seq | 4:42 3:08 2:21 1:53 1:34 |

EC-3, 10 JUL 2025 to 07 AUG 2025

EC-3, 10 JUL 2025 to 07 AUG 2025