

24137

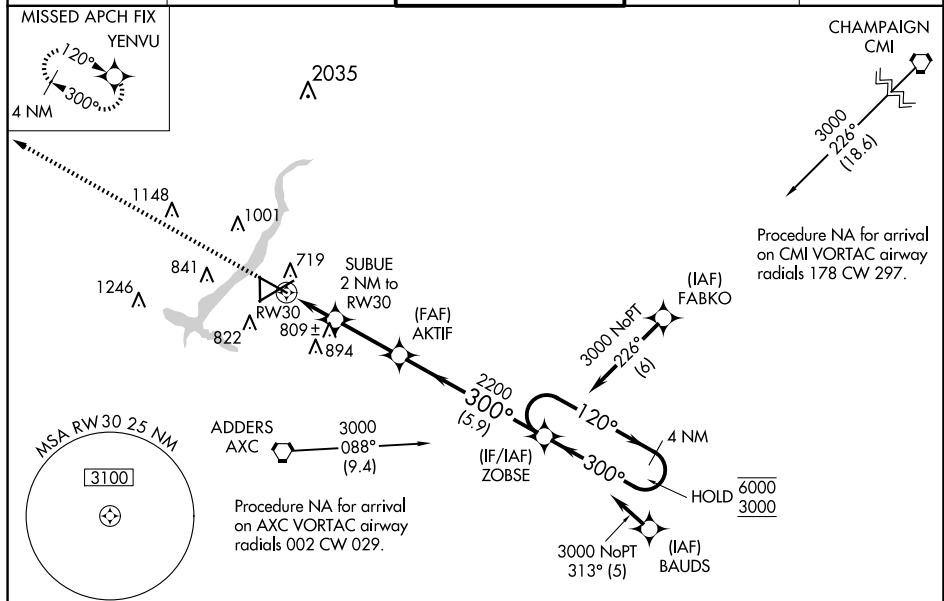
RNAV (GPS) RWY 30
DECATUR (DEC)

⚠ For uncompensated baro-VNAV systems, LNAV/VNAV NA below -19°C or above 54°C.

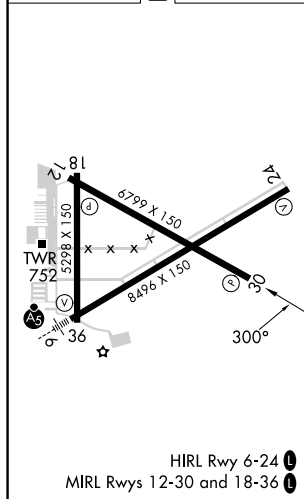
⚠ When local altimeter setting not received, use Lincoln altimeter setting and increase all DA/MDA 80 feet, increase LNAV Cat C/D and Circling Cat C/D visibility ¼ SM. Baro-VNAV and VDP NA when using Lincoln altimeter setting.

MISSED APPROACH:
Climb to 3000 direct
YENVU and hold.

ATIS 126.35	CHAMPAIGN APP CON★ 132.85 290.225	DECATUR TOWER★ 118.9 (CTAF) 0 291.775	GND CON 121.75 291.775	UNICOM 122.95
-----------------------	---	---	----------------------------------	-------------------------



ELEV	682	D	TDZE	679
------	-----	----------	------	-----



* LNAV only SUBBUE 2 NM to RW30 * 1 NM to RW30 RW30 1 NM 1 NM 2.6 NM 5.9 NM	3000 YENVU 2200 2200 1360 2200 4 NM Holding Pattern 120° 300° 6000 3000 GP 3.00° TCH 51
CATEGORY	A B C D
LPV DA	879-1 200 (200-1)
LNAV/VNAV	929-1 250 (300-1)
LNAV MDA	1060-1 381 (400-1) 1060-1½ 381 (400-1½)
CIRCLING	1140-1 458 (500-1) 1240-1 558 (600-1) 1360-2 678 (700-2) 1360-2¼ 678 (700-2¼)

DECATUR (DEC)

RNAV (GPS) RWY 30

EC-3, 10 JUL 2025 to 07 AUG 2025