

LOC/DME I-DEC	APP CRS	Rwy Idg	8496
110.9	060°	TDZE	677
Chan 46		Apt Elev	682

ILS or LOC RWY 6
DECATUR (DEC)

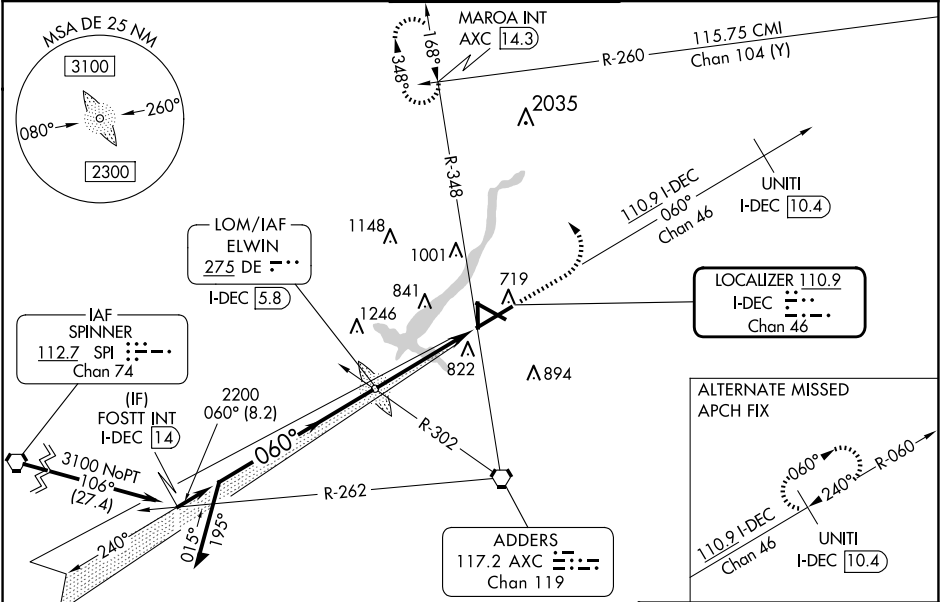
⚠ When local altimeter setting not received, use Lincoln altimeter setting and increase S-ILS 6 DA to 957 feet; increase all MDAs 80 feet and S-LOC 6 visibility Cat C/D to RVR 6000 and Circling visibility Cat C/D ¼ SM. For inop ALS, increase S-LOC 6 Cat C/D visibility to 1 ½ SM. For inop ALS when using Lincoln altimeter, increase S-ILS all Cats visibility to RVR 4500. VDP NA when using Lincoln altimeter setting. * RVR 1800 authorized with use of FD or AP or HUD to DA (NA when using Lincoln altimeter setting).

MALSR

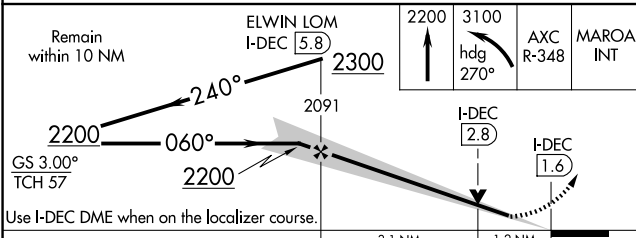
A5

MISSED APPROACH: Climb to 2200 then climbing left turn to 3100 on heading 270° and AXC VORTAC R-348 to MAROA INT/ AXC 14.3 DME and hold.

ATIS	CHAMPAIGN APP CON*	DECATUR TOWER*	GND CON	UNICOM
126.35	132.85 290.225	118.9 (CTAF) 0 291.775	121.75 291.775	122.95



Procedure NA for arrival on SPI VORTAC airway radials 062 CW 153.



ELEV 682

TDZE 677

TWR 752

5298 X 150

6799 X 150

8496 X 150

36

060°

HIRL Rwy 6-24

MIRL Rws 12-30 and 18-36

FAF to MAP 4.3 NM

Knots	60	90	120	150	180
Min:Seq	4:18	2:52	2:09	1:43	1:26

EC-3, 10 JUL 2025 to 07 AUG 2025

EC-3, 10 JUL 2025 to 07 AUG 2025